

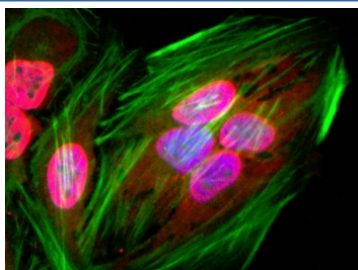
Recombinant Acetyl Lysine Antibody [clone RM101] (R20192)

Catalog No.	Formulation	Size
R20192-100UG	1 mg/ml in PBS with 50% glycerol, 1% BSA and 0.09% sodium azide	100 ug

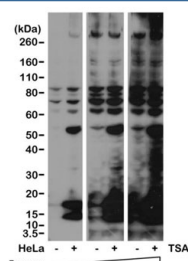
Recombinant **RABBIT MONOCLONAL**

[Bulk quote request](#)

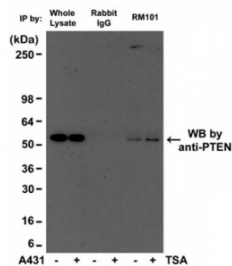
Availability	1-3 business days
Species Reactivity	All Species
Format	Purified
Clonality	Recombinant Rabbit Monoclonal
Isotype	Rabbit IgG
Clone Name	RM101
Purity	Protein A purified from animal origin-free supernatant
Gene ID	N/A
Applications	Western Blot : 1:500 -1:2000 dilution Immunoprecipitation : 1:100-1:500 dilution Chromatin IP (ChIP) : 1:100-1:500 dilution Immunocytochemistry : 1:100-1:500 dilution Immunohistochemistry : 1:100-1:500 dilution (1)
Limitations	This recombinant Acetyl Lysine antibody is available for research use only.



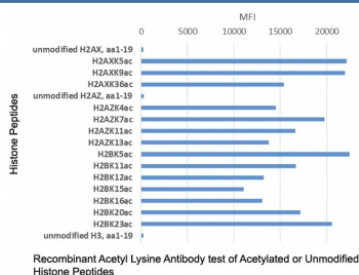
ICC staining of human HeLa cells using recombinant Acetyl Lysine antibody (red). Actin filaments was labeled with fluorescein phalloidin (green), and nuclei stained with DAPI (blue).



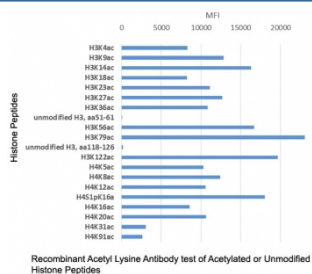
Western blot of human HeLa cells non-treated or treated with Trichostatin A (TSA) with recombinant Acetyl Lysine antibody at 1:2000.



IP of human A431 cell lysate with recombinant Acetyl Lysine antibody at 1:500 and probed with anti-PTEN mouse mAb.



The recombinant Acetyl Lysine antibody recognizes acetylated lysine in peptides with different sequences. It does not react with non-acetylated lysine.



The recombinant Acetyl Lysine antibody recognizes acetylated lysine in peptides with different sequences. It does not react with non-acetylated lysine.

Description

This recombinant Acetyl Lysine antibody reacts to lysine-acetylated proteins. No cross reactivity with non-acetylated lysine, and lysine with other modification.

Application Notes

The stated application concentrations are suggested starting points. Titration of the recombinant Acetyl Lysine antibody may be required due to differences in protocols and secondary/substrate sensitivity.

1. A pH6 Citrate buffer or pH9 Tris/EDTA buffer HIER step is recommended for testing of FFPE tissue sections.

Immunogen

Acetyllysine-BSA was used as the immunogen for this recombinant Acetyl Lysine antibody.

Storage

Store the recombinant Acetyl Lysine antibody at -20oC (with glycerol) or aliquot and store at -20oC (without glycerol).

