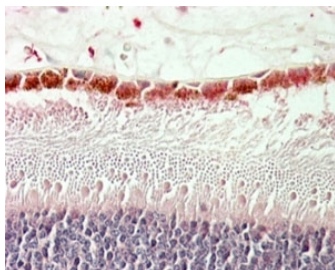


## RDH5 Antibody (R35568)

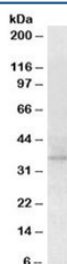
Catalog No.	Formulation	Size
R35568-100UG	0.5 mg/ml in 1X TBS, pH7.3, with 0.5% BSA (US sourced) and 0.02% sodium azide	100 ug

[Bulk quote request](#)

Availability	1-3 business days
Species Reactivity	Human, Mouse
Predicted Reactivity	Dog
Format	Antigen affinity purified
Clonality	Polyclonal (goat origin)
Isotype	Goat Ig
Purity	Antigen affinity
Gene ID	5959
Applications	Western Blot : 2-4ug/ml Immunohistochemistry (FFPE) : 5-10ug/ml ELISA (peptide) LOD : 1:8000
Limitations	This RDH5 antibody is available for research use only.



IHC staining of FFPE human retina with RDH5 antibody at 5ug/ml. HIER: steamed with pH6 citrate buffer, AP-staining. Staining of the ganglion cell layer is observed.



Western blot testing of mouse eye lysate with RDH5 antibody at 2ug/ml. Predicted/observed molecular weight: ~35kDa.

## Description

Additional name(s) for this target protein: Retinol dehydrogenase 5

## Application Notes

Optimal dilution of the RDH5 antibody should be determined by the researcher.

## Immunogen

Amino acids RDRQSLPASNAFV were used as the immunogen for this RDH5 antibody.

## Storage

Aliquot and store the RDH5 antibody at -20oC.