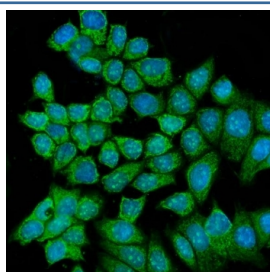


RCC2 Antibody (RQ6796)

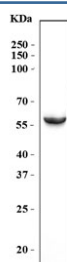
Catalog No.	Formulation	Size
RQ6796	0.5mg/ml if reconstituted with 0.2ml sterile DI water	100 ug

Bulk quote request

Availability	1-3 business days
Species Reactivity	Human
Format	Antigen affinity purified
Clonality	Polyclonal (rabbit origin)
Isotype	Rabbit IgG
Purity	Antigen affinity purified
Buffer	Lyophilized from 1X PBS with 2% Trehalose
UniProt	Q9P258
Localization	Cytoplasmic, nuclear
Applications	Western Blot : 1-2ug/ml Immunofluorescence (FFPE) : 5ug/ml Direct ELISA : 0.1-0.5ug/ml
Limitations	This RCC2 antibody is available for research use only.



Immunofluorescent staining of FFPE human MCF7 cells with RCC2 antibody (green) and DAPI nuclear stain (blue). HIER: steam section in pH6 citrate buffer for 20 min.



Western blot testing of human HepG2 cell lysate with RCC2 antibody. Predicted molecular weight ~56 kDa.

Description

Protein RCC2 also known as telophase disk protein of 60 kDa (TD-60) or RCC1-like protein TD-60 is a protein that in humans is encoded by the RCC2 gene. The protein encoded by this gene is a guanine exchange factor that is active on RalA, a small GTPase. The encoded protein and RalA are both essential for proper kinetochore-microtubule function in early mitosis. This protein has been shown to be a biomarker for colorectal cancer.

Application Notes

Optimal dilution of the RCC2 antibody should be determined by the researcher.

Immunogen

Recombinant human protein (amino acids K293-L522) was used as the immunogen for the RCC2 antibody.

Storage

After reconstitution, the RCC2 antibody can be stored for up to one month at 4°C. For long-term, aliquot and store at -20°C. Avoid repeated freezing and thawing.