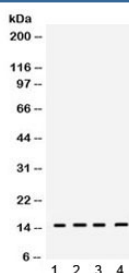


RBX1 Antibody / ROC1 (R32161)

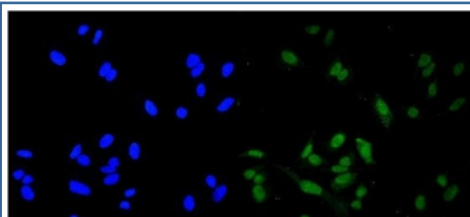
Catalog No.	Formulation	Size
R32161	0.5mg/ml if reconstituted with 0.2ml sterile DI water	100 ug

Bulk quote request

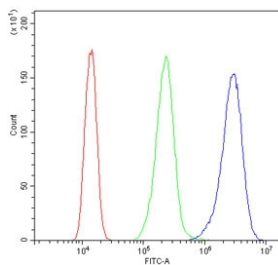
Availability	1-3 business days
Species Reactivity	Human, Mouse, Rat
Format	Antigen affinity purified
Clonality	Polyclonal (rabbit origin)
Isotype	Rabbit IgG
Purity	Antigen affinity
Buffer	Lyophilized from 1X PBS with 2.5% BSA and 0.025% sodium azide
UniProt	P62877
Applications	Western Blot : 0.1-0.5ug/ml Immunofluorescence : 2-4ug/ml Flow Cytometry : 1-3ug/million cells
Limitations	This RBX1 antibody is available for research use only.



Western blot testing of 1) rat testis, 2) rat brain, 3) mouse brain and 4) mouse spleen lysate with RBX1 antibody. Expected molecular weight: 12-15 kDa.



Immunofluorescent staining of FFPE human HeLa cells with RBX1 antibody (green) at 2ug/ml and DAPI nuclear stain (blue). HIER: steam section in pH6 citrate buffer for 20 min.



Flow cytometry testing of human A431 cells with RBX1 antibody at 1ug/million cells (blocked with goat sera); Red=cells alone, Green=isotype control, Blue= RBX1 antibody.

Description

RING-box protein 1, also known as ROC1, is a protein that in humans is encoded by the RBX1 gene. This gene is mapped to chromosome 22q13.2 based on an alignment of the RBX1 sequence with the genomic sequence. ROC1 is recruited by cullin-1 to form a quaternary SCF (HOS)-ROC1 holoenzyme (with SKP1 and the BTRCP homolog HOS). SCF (HOS)-ROC1 binds IKK-beta-phosphorylated I-kappa-B-alpha and catalyzes its ubiquitination in the presence of ubiquitin, E1, and CDC34. Conclusively, ROC1 plays a unique role in the ubiquitination reaction by heterodimerizing with cullin-1 to catalyze ubiquitin polymerization.

Application Notes

Optimal dilution of the RBX1 antibody should be determined by the researcher.

Immunogen

Amino acids NHAFFHFCISRWLKTRQVCPLDNREWEFQKYGH of human ROC1/RBX1 were used as the immunogen for the RBX1 antibody.

Storage

After reconstitution, the RBX1 antibody can be stored for up to one month at 4oC. For long-term, aliquot and store at -20oC. Avoid repeated freezing and thawing.