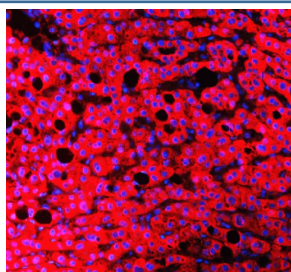


## RBP4 Antibody / Retinol Binding Protein 4 (R31773)

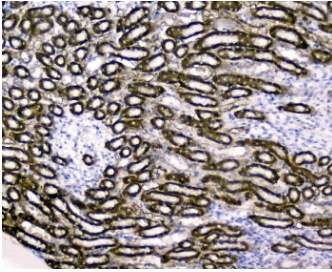
Catalog No.	Formulation	Size
R31773	0.5mg/ml if reconstituted with 0.2ml sterile DI water	100 ug

**Bulk quote request**

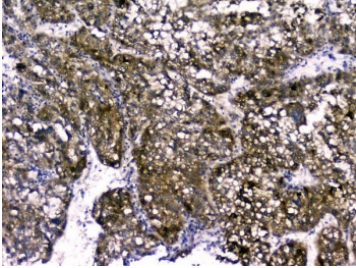
<b>Availability</b>	1-3 business days
<b>Species Reactivity</b>	Human
<b>Format</b>	Antigen affinity purified
<b>Clonality</b>	Polyclonal (rabbit origin)
<b>Isotype</b>	Rabbit IgG
<b>Purity</b>	Antigen affinity
<b>Buffer</b>	Lyophilized from 1X PBS with 2% Trehalose
<b>Gene ID</b>	5950
<b>Localization</b>	P02753
<b>Applications</b>	Western Blot : 0.5-1ug/ml Immunohistochemistry : 2-5ug/ml Immunofluorescence : 5ug/ml ELISA : 0.1-0.5ug/ml (human protein tested); request BSA free format for coating
<b>Limitations</b>	This RBP4 antibody is available for research use only.



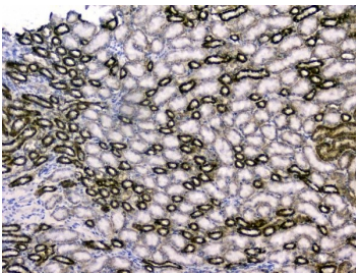
Immunofluorescent staining of FFPE human liver cancer tissue with RBP4 antibody (red) and DAPI nuclear stain (blue). HIER: steam section in pH8 EDTA buffer for 20 min.



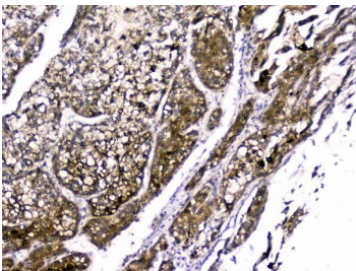
IHC staining of FFPE human liver cancer with RBP4 antibody. HIER: boil tissue sections in pH6, 10mM citrate buffer, for 20 min and allow to cool before testing.



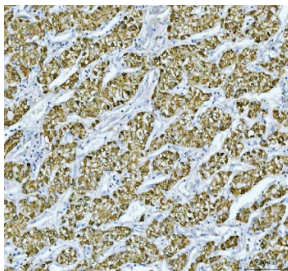
IHC staining of FFPE human liver cancer with RBP4 antibody. HIER: boil tissue sections in pH6, 10mM citrate buffer, for 20 min and allow to cool before testing.



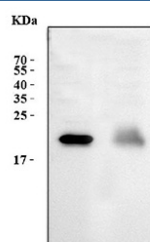
IHC staining of FFPE mouse kidney with RBP4 antibody. HIER: boil tissue sections in pH6, 10mM citrate buffer, for 20 min and allow to cool before testing.



IHC staining of FFPE mouse kidney with RBP4 antibody. HIER: boil tissue sections in pH6, 10mM citrate buffer, for 20 min and allow to cool before testing.



IHC staining of FFPE human liver cancer tissue with RBP4 antibody, HRP-labeled secondary and DAB substrate. HIER: boil tissue sections in pH8 EDTA for 20 min and allow to cool before testing.



Western blot testing of 1) human HepG2 and 2) human HCCP cell lysate with RBP4 antibody. Predicted molecular weight: ~23 kDa.

