

RBP Antibody / Retinol Binding Protein 1 [clone G4E4] (V2247)

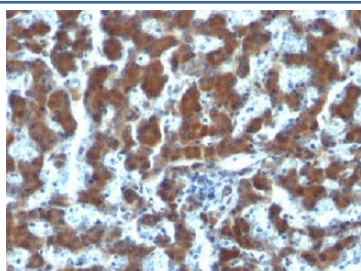
| Catalog No. | Formulation | Size |
|----------------|---|--------|
| V2247-100UG | 0.2 mg/ml in 1X PBS with 0.1 mg/ml BSA (US sourced) and 0.05% sodium azide | 100 ug |
| V2247-20UG | 0.2 mg/ml in 1X PBS with 0.1 mg/ml BSA (US sourced) and 0.05% sodium azide | 20 ug |
| V2247SAF-100UG | 1 mg/ml in 1X PBS; BSA free, sodium azide free | 100 ug |
| V2247IHC-7ML | Prediluted in 1X PBS with 0.1 mg/ml BSA (US sourced) and 0.05% sodium azide; *For IHC use only* | 7 ml |



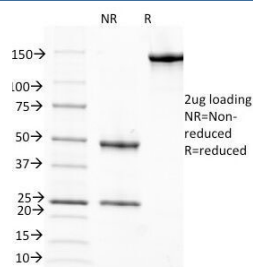
Citations (1)

[Bulk quote request](#)

| | |
|--------------------|--|
| Species Reactivity | Human, Mouse, Rat |
| Format | Purified |
| Clonality | Monoclonal (mouse origin) |
| Isotype | Mouse IgG1, kappa |
| Clone Name | G4E4 |
| Purity | Protein G affinity chromatography |
| Buffer | 1X PBS, pH 7.4 |
| Gene ID | 5947 |
| Localization | Cytoplasmic |
| Applications | Immunohistochemistry (FFPE) : 0.1-0.2ug/ml for 30 min at RT |
| Limitations | This RBP antibody is available for research use only. |



IHC testing of FFPE human hepatocellular carcinoma and RBP antibody (clone G4E4).



SDS-PAGE Analysis of Purified, BSA-Free RBP Antibody (clone G4E4). Confirmation of Integrity and Purity of the Antibody.

Description

Retinol binding protein a single-chain glycoprotein belonging to the superfamily of hydrophobic molecule transporter proteins, which is responsible for transport of retinol (vitamin A1) from the liver to peripheral target tissues, like the eye, where it mediates the cellular uptake. RBP1 is synthesized by hepatic parenchymal cells where it becomes bound to its ligand retinol and is then released into the circulation, where it binds further to the protein transthyretin, to form a transporting complex, which is big enough not to be lost by filtration through the kidney glomeruli. It is detected in nearly all tissues with higher expression in adult ovary, pancreas, pituitary gland, adrenal gland, and fetal liver.

Application Notes

The concentration stated for each application is a general starting point. Variations in protocols, secondaries and substrates may require the antibody to be titrated up or down for optimal performance.

1. Staining of formalin-fixed tissues requires boiling tissue sections in 10mM Citrate Buffer, pH 6.0, for 10-20 min followed by cooling at RT for 20 minutes
2. The prediluted format is supplied in a dropper bottle and is optimized for use in IHC. After epitope retrieval step (if required), drip mAb solution onto the tissue section and incubate at RT for 30 min.

Immunogen

Retinol binding protein purified from human plasma was used as the immunogen for this RBP antibody. Its epitope localizes between amino acids 74-182.

Storage

Store the RBP antibody at 2-8°C (with azide) or aliquot and store at -20°C or colder (without azide).

Alternate Names

Cellular retinol-binding protein I, CRBP1, RBP antibody

References (1)