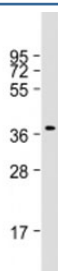


RASSF2 Antibody [clone 1509CT269.10.9.29] (F53807)

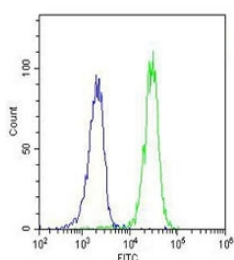
| Catalog No. | Formulation | Size |
|---------------|--|---------|
| F53807-0.2ML | In 1X PBS, pH 7.4, with 0.09% sodium azide | 0.2 ml |
| F53807-0.05ML | In 1X PBS, pH 7.4, with 0.09% sodium azide | 0.05 ml |

Bulk quote request

| | |
|---------------------------|--|
| Availability | 1-3 business days |
| Species Reactivity | Human |
| Format | Purified |
| Clonality | Monoclonal (mouse origin) |
| Isotype | Mouse IgG2a, kappa |
| Clone Name | 1509CT269.10.9.29 |
| Purity | Protein G affinity chromatography |
| UniProt | P50749 |
| Applications | Western Blot : 1:500-1000 FACS (intracellular) : 1:25 |
| Limitations | This RASSF2 antibody is available for research use only. |



Western blot testing of human Raji cell lysate with RASSF2 antibody at 1:1000.
Predicted molecular weight: 38 kDa.



Intracellular FACS testing of human Raji cells with RASSF2 antibody (green) and [isotype control](#) (blue) at 1:25.

Description

Ras association (RalGDS/AF-6) domain family member 2 is a potential tumor suppressor. Acts as a KRAS-specific effector protein. May promote apoptosis and cell cycle arrest. Stabilizes STK3/MST2 by protecting it from proteasomal degradation.

Application Notes

Titration of the RASSF2 antibody may be required due to differences in protocols and substrate sensitivity.

Immunogen

Human recombinant protein corresponding to amino acids 1-326 was used as the immunogen for this RASSF2 antibody.

Storage

Aliquot the RASSF2 antibody and store frozen at -20oC or colder. Avoid repeated freeze-thaw cycles.