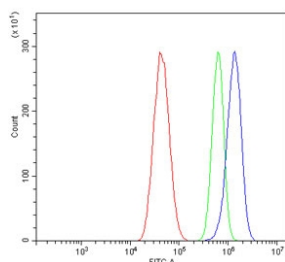


## RAPGEF3 Antibody / Epac1 (RQ6153)

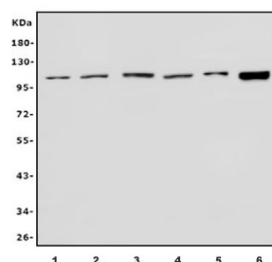
Catalog No.	Formulation	Size
RQ6153	0.5mg/ml if reconstituted with 0.2ml sterile DI water	100 ug

**Bulk quote request**

<b>Availability</b>	1-3 business days
<b>Species Reactivity</b>	Human, Mouse, Rat, Monkey
<b>Format</b>	Antigen affinity purified
<b>Clonality</b>	Polyclonal (rabbit origin)
<b>Isotype</b>	Rabbit IgG
<b>Purity</b>	Affinity purified
<b>Buffer</b>	Lyophilized from 1X PBS with 2% Trehalose and 0.025% sodium azide
<b>UniProt</b>	O95398
<b>Applications</b>	Western Blot : 1-2ug/ml Flow Cytometry : 1-3ug/million cells Direct ELISA : 0.1-0.5ug/ml
<b>Limitations</b>	This RAPGEF3 antibody is available for research use only.



Flow cytometry testing of human U-87 MG cells with RAPGEF3 antibody at 1ug/million cells (blocked with goat sera); Red=cells alone, Green=isotype control, Blue= RAPGEF3 antibody.



Western blot testing of 1) human HeLa, 2) human placenta, 3) monkey kidney, 4) rat kidney, 5) rat lung and 6) mouse kidney lysate with RAPGEF3 antibody. Predicted molecular weight ~104 kDa.

## Description

Rap guanine nucleotide exchange factor 3 also known as exchange factor directly activated by cAMP 1 (EPAC1) or cAMP-regulated guanine nucleotide exchange factor I (cAMP-GEFI) is a protein that in humans is encoded by the RAPGEF3 gene. As the name suggests, EPAC proteins (EPAC1 and EPAC2) are a family of intracellular sensors for cAMP, and function as nucleotide exchange factors for the Rap subfamily of RAS-like small GTPases.

## Application Notes

Optimal dilution of the RAPGEF3 antibody should be determined by the researcher.

## Immunogen

A human recombinant partial protein (amino acids E451-D698) was used as the immunogen for the RAPGEF3 antibody.

## Storage

After reconstitution, the RAPGEF3 antibody can be stored for up to one month at 4oC. For long-term, aliquot and store at -20oC. Avoid repeated freezing and thawing.