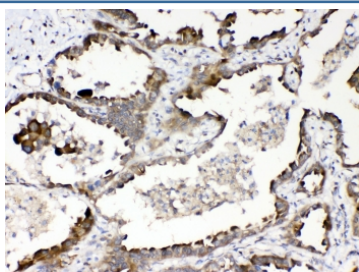


RanBP1 Antibody / Ran-specific binding protein 1 (R32725)

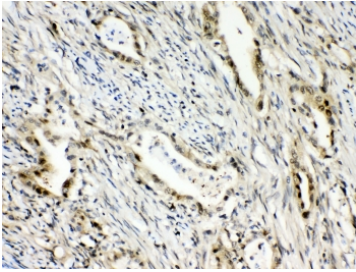
Catalog No.	Formulation	Size
R32725	0.5mg/ml if reconstituted with 0.2ml sterile DI water	100 ug

Bulk quote request

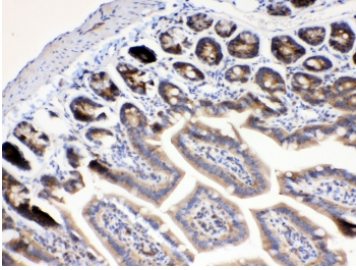
Availability	1-3 business days
Species Reactivity	Human, Mouse, Rat
Format	Antigen affinity purified
Clonality	Polyclonal (rabbit origin)
Isotype	Rabbit IgG
Purity	Antigen affinity
Buffer	Lyophilized from 1X PBS with 2.5% BSA, 0.025% sodium azide
UniProt	P43487
Localization	Cytoplasmic
Applications	Western Blot : 0.5-1ug/ml Immunohistochemistry (FFPE) : 1-2ug/ml Immunofluorescence : 2-4ug/ml Flow Cytometry : 1-3ug/million cells
Limitations	This RanBP1 antibody is available for research use only.



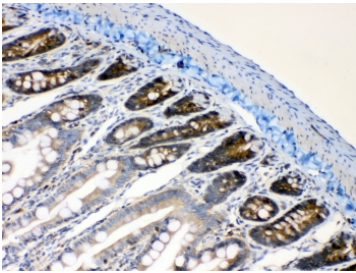
IHC testing of FFPE human lung cancer tissue with RanBP1 antibody at 1ug/ml.
Required HIER: steam section in pH6 citrate buffer for 20 min and allow to cool prior to testing.



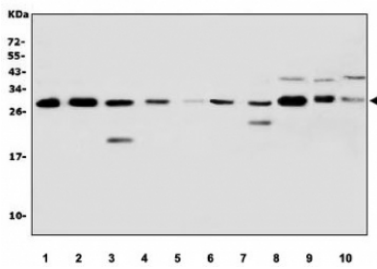
IHC testing of FFPE human intestinal cancer tissue with RanBP1 antibody at 1ug/ml. Required HIER: steam section in pH6 citrate buffer for 20 min and allow to cool prior to testing.



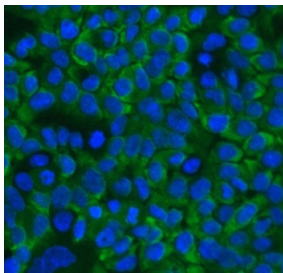
IHC testing of FFPE mouse intestine tissue with RanBP1 antibody at 1ug/ml. Required HIER: steam section in pH6 citrate buffer for 20 min and allow to cool prior to testing.



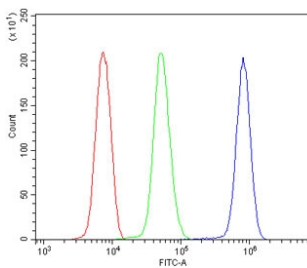
IHC testing of FFPE rat intestine tissue with RanBP1 antibody at 1ug/ml. Required HIER: steam section in pH6 citrate buffer for 20 min and allow to cool prior to testing.



Western blot testing of 1) human K562, 2) human HEK293, 3) human HL60, 4) human U-2 OS, 5) human A431, 6) human HepG2, 7) human U937, 8) rat testis, 9) rat C6 and 10) mouse testis tissue lysate with RanBP1 antibody. Expected molecular weight 23-26 kDa.



Immunofluorescent staining of FFPE human A431 cells with RanBP1 antibody (green) at 2ug/ml and DAPI nuclear stain (blue). HIER: steam section in pH6 citrate buffer for 20 min.



Flow cytometry testing of human U937 cells with RanBP1 antibody at 1ug/million cells (blocked with goat sera); Red=cells alone, Green=isotype control, Blue= RanBP1 antibody.

Description

Ran-specific binding protein 1 is an enzyme that in humans is encoded by the RANBP1 gene. This gene encodes a protein that forms a complex with Ras-related nuclear protein (Ran) and metabolizes guanoside triphosphate (GTP). This complex participates in the regulation of the cell cycle by controlling transport of proteins and nucleic acids into the nucleus. There are multiple pseudogenes for this gene on chromosomes 9, 12, 17, and X. Alternative splicing results in multiple transcript variants.

Application Notes

Optimal dilution of the RanBP1 antibody should be determined by the researcher.

Immunogen

Amino acids A2-Q201 from the human protein were used as the immunogen for the RanBP1 antibody.

Storage

After reconstitution, the RanBP1 antibody can be stored for up to one month at 4°C. For long-term, aliquot and store at -20°C. Avoid repeated freezing and thawing.