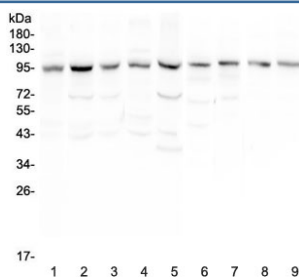


## RALBP1 Antibody (RQ4300)

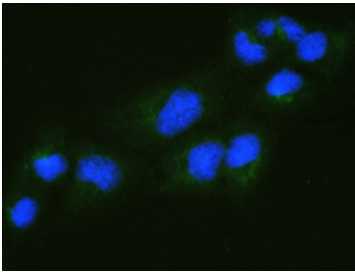
Catalog No.	Formulation	Size
RQ4300	0.5mg/ml if reconstituted with 0.2ml sterile DI water	100 ug

**Bulk quote request**

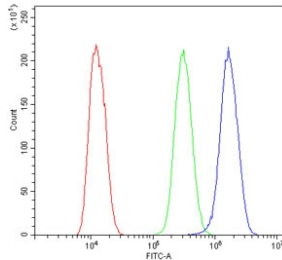
<b>Availability</b>	1-3 business days
<b>Species Reactivity</b>	Human, Mouse, Rat
<b>Format</b>	Antigen affinity purified
<b>Clonality</b>	Polyclonal (rabbit origin)
<b>Isotype</b>	Rabbit IgG
<b>Purity</b>	Antigen affinity purified
<b>Buffer</b>	Lyophilized from 1X PBS with 2% Trehalose and 0.025% sodium azide
<b>UniProt</b>	Q15311
<b>Localization</b>	Cytoplasmic, nuclear, cell membrane
<b>Applications</b>	Western Blot : 0.5-1ug/ml Immunohistochemistry (FFPE) : 1-2ug/ml Immunofluorescence (FFPE) : 2-4ug/ml Flow Cytometry : 1-3ug/million cells Direct ELISA : 0.1-0.5ug/ml
<b>Limitations</b>	This RALBP1 antibody is available for research use only.



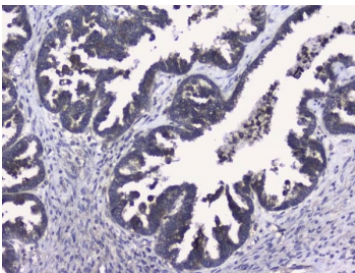
Western blot testing of human 1) HeLa, 2) placenta, 3) HepG2, 4) SGC-7901, 5) 22RV1, 6) rat lung, 7) mouse lung, 8) mouse testis and 9) mouse ovary with RALBP1 antibody at 0.5ug/ml. Predicted molecular weight ~76 kDa, observed molecular weight: 90-95 kDa.



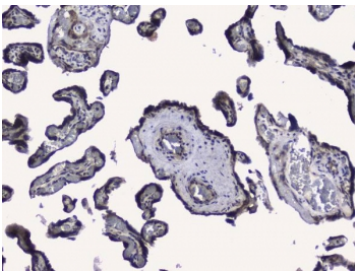
Immunofluorescent staining of FFPE human U-2 OS cells with RALBP1 antibody (green) and DAPI nuclear stain (blue). HIER: boil tissue sections in pH6, 10mM citrate buffer, for 20 min and allow to cool before testing.



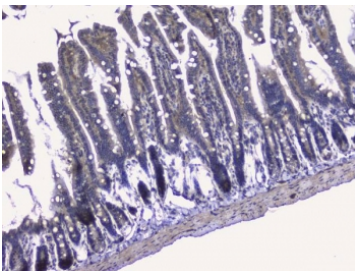
Flow cytometry testing of human U-2 OS cells with RALBP1 antibody at 1ug/million cells (blocked with goat sera); Red=cells alone, Green=isotype control, Blue= RALBP1 antibody.



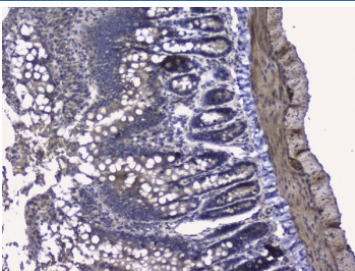
IHC staining of FFPE human ovarian cancer with RALBP1 antibody. HIER: boil tissue sections in pH6, 10mM citrate buffer, for 20 min and allow to cool before testing.



IHC staining of FFPE human placenta with RALBP1 antibody. HIER: boil tissue sections in pH6, 10mM citrate buffer, for 20 min and allow to cool before testing.



IHC staining of FFPE mouse small intestine with RALBP1 antibody. HIER: boil tissue sections in pH6, 10mM citrate buffer, for 20 min and allow to cool before testing.



IHC staining of FFPE rat small intestine with RALBP1 antibody. HIER: boil tissue sections in pH6, 10mM citrate buffer, for 20 min and allow to cool before testing.

## Description

RalA-binding protein 1 is a protein that in humans is encoded by the RALBP1 gene. Small G proteins, such as RAL, have GDP-bound inactive and GTP-bound active forms, which shift from the inactive to the active state through the action of RALGDS, which in turn is activated by RAS. RALBP1 plays a role in receptor-mediated endocytosis and is a downstream effector of the small GTP-binding protein RAL. RALBP1 is also the dominant transporter of lipid peroxidation-derived glutathione conjugates and participates in several mitotic events, including inactivation of endocytosis and separation and polar movement of centrioles and appropriate distribution of mitochondria to daughter cells following mitosis.

## Application Notes

Optimal dilution of the RALBP1 antibody should be determined by the researcher.

## Immunogen

A recombinant human protein corresponding to amino acids K239-Q506 was used as the immunogen for the RALBP1 antibody.

## Storage

After reconstitution, the RALBP1 antibody can be stored for up to one month at 4°C. For long-term, aliquot and store at -20°C. Avoid repeated freezing and thawing.