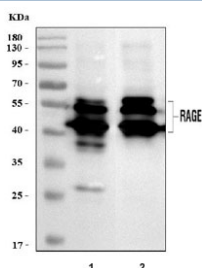


## Rage Antibody / Ager (RQ8039)

| Catalog No. | Formulation   | Size   |
|-------------|---|--------|
| RQ8039      | 0.5mg/ml if reconstituted with 0.2ml sterile DI water | 100 ug |

**Bulk quote request**

|                           |  |
|---------------------------|--|
| <b>Availability</b>       | 1-3 business days  |
| <b>Species Reactivity</b> | Mouse, Rat   |
| <b>Format</b>             | Antigen affinity purified                                |
| <b>Clonality</b>          | Polyclonal (rabbit origin)                               |
| <b>Isotype</b>            | Rabbit IgG   |
| <b>Purity</b>             | Antigen affinity purified                                |
| <b>Buffer</b>             | Lyophilized from 1X PBS with 2% Trehalose                |
| <b>UniProt</b>            | Q62151   |
| <b>Applications</b>       | Western Blot : 0.5-1ug/ml<br>Direct ELISA : 0.1-0.5ug/ml |
| <b>Limitations</b>        | This Rage antibody is available for research use only.   |



Western blot testing of 1) rat lung and 2) mouse lung tissue lysate with Rage antibody.  
Expected molecular weight: 45-55 kDa depending on glycosylation level.

## Description

Enables S100 protein binding activity; advanced glycation end-product binding activity; and heparin binding activity. Involved in several processes, including cellular response to amyloid-beta; negative regulation of long-term synaptic potentiation; and positive regulation of cytokine production. Acts upstream of or within several processes, including induction of positive chemotaxis; negative regulation of advanced glycation end-product receptor activity; and positive regulation of macromolecule metabolic process. Located in extracellular space and plasma membrane. Is expressed in several structures, including alimentary system; brain; genitourinary system; hemolymphoid system gland; and lung. Human ortholog(s) of this gene implicated in several diseases, including autoimmune disease (multiple); cardiovascular

system disease (multiple); cystic fibrosis; kidney failure (multiple); and lupus nephritis. Orthologous to human AGER (advanced glycosylation end-product specific receptor).

## Application Notes

Optimal dilution of the Rage antibody should be determined by the researcher.

## Immunogen

E. coli-derived recombinant mouse protein (amino acids Q24-E320) was used as the immunogen for the Rage antibody.

## Storage

After reconstitution, the Rage antibody can be stored for up to one month at 4oC. For long-term, aliquot and store at -20oC. Avoid repeated freezing and thawing.