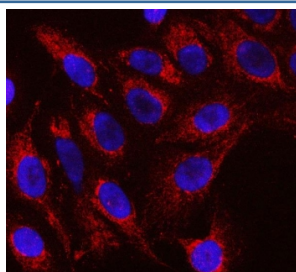


Raftlin Antibody / RFTN1 (RQ7788)

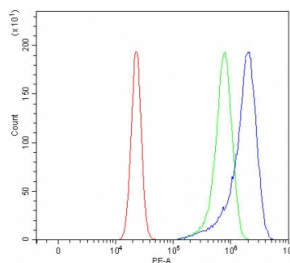
Catalog No.	Formulation	Size
RQ7788	0.5mg/ml if reconstituted with 0.2ml sterile DI water	100 ug

Bulk quote request

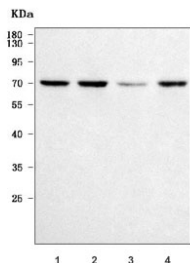
Availability	1-3 business days
Species Reactivity	Human
Format	Antigen affinity purified
Clonality	Polyclonal (rabbit origin)
Isotype	Rabbit IgG
Purity	Antigen affinity purified
Buffer	Lyophilized from 1X PBS with 2% Trehalose
UniProt	Q14699
Localization	Cytoplasmic
Applications	Western Blot : 0.5-1ug/ml Immunofluorescence : 5ug/ml Flow Cytometry : 1-3ug/million cells Direct ELISA : 0.1-0.5ug/ml
Limitations	This Raftlin antibody is available for research use only.



Immunofluorescent staining of FFPE human U-2 OS cells with Raftlin antibody (red) and DAPI nuclear stain (blue). HIER: steam section in pH6 citrate buffer for 20 min.



Flow cytometry testing of human U-2 OS cells with Raftlin antibody at 1ug/million cells (blocked with goat sera); Red=cells alone, Green=isotype control, Blue= Raftlin antibody.



Western blot testing of human 1) HeLa , 2) Raji, 3) SH-SY5Y and 4) Daudi cell lysate with Raftlin antibody. Predicted molecular weight ~63 kDa, commonly observed at 63-70 kDa.

Description

Enables double-stranded RNA binding activity. Involved in B cell receptor signaling pathway; membrane raft assembly; and positive regulation of growth rate. Acts upstream of or within dsRNA transport; response to exogenous dsRNA; and toll-like receptor 3 signaling pathway. Located in endosome; membrane raft; and plasma membrane. Part of protein-containing complex.

Application Notes

Optimal dilution of the Raftlin antibody should be determined by the researcher.

Immunogen

E. coli-derived recombinant human protein (amino acids N18-K437) was used as the immunogen for the Raftlin antibody.

Storage

After reconstitution, the Raftlin antibody can be stored for up to one month at 4oC. For long-term, aliquot and store at -20oC. Avoid repeated freezing and thawing.