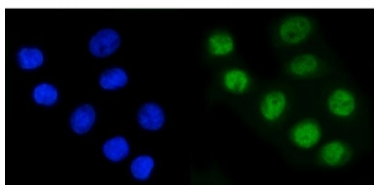


RAD21 Antibody / HR21 (RQ7197)

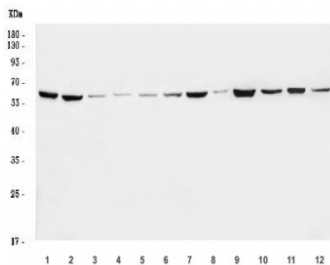
Catalog No.	Formulation	Size
RQ7197	0.5mg/ml if reconstituted with 0.2ml sterile DI water	100 ug

Bulk quote request

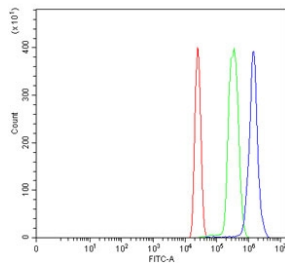
Availability	1-3 business days
Species Reactivity	Human, Mouse, Rat, Monkey
Format	Antigen affinity purified
Clonality	Polyclonal (rabbit origin)
Isotype	Rabbit IgG
Purity	Antigen affinity purified
Buffer	Lyophilized from 1X PBS with 2% Trehalose
UniProt	O60216
Localization	Nuclear, cytoplasmic
Applications	Western Blot : 0.5-1ug/ml Immunofluorescence : 5ug/ml Flow Cytometry : 1-3ug/million cells Direct ELISA : 0.1-0.5ug/ml
Limitations	This RAD21 antibody is available for research use only.



Immunofluorescent staining of FFPE human SiHa cells with RAD21 antibody (green) and DAPI nuclear stain (blue). HIER: steam section in pH6 citrate buffer for 20 min.



Western blot testing of 1) monkey COS-7, 2) human HeLa, 3) human MOLT-4, 4) human Jurkat, 5) human HEL, 6) human Daudi, 7) human A431, 8) human T-47D, 9) rat brain, 10) rat pancreas, 11) mouse brain and 12) mouse pancreas tissue lysate with RAD21 antibody. Expected molecular weight: ~120 kDa (full length), 64-70 kDa (cleavage product).



Flow cytometry testing of human HL60 cells with RAD21 antibody at 1ug/million cells (blocked with goat sera); Red=cells alone, Green=isotype control, Blue= RAD21 antibody.

Description

Double-strand-break repair protein rad21 homolog is a protein that in humans is encoded by the RAD21 gene. The protein encoded by this gene is highly similar to the gene product of *Schizosaccharomyces pombe* rad21, a gene involved in the repair of DNA double-strand breaks, as well as in chromatid cohesion during mitosis. This protein is a nuclear phospho-protein, which becomes hyperphosphorylated in cell cycle M phase. The highly regulated association of this protein with mitotic chromatin specifically at the centromere region suggests its role in sister chromatid cohesion in mitotic cells.

Application Notes

Optimal dilution of the RAD21 antibody should be determined by the researcher.

Immunogen

Recombinant human protein (amino acids D292-K529) was used as the immunogen for the RAD21 antibody.

Storage

After reconstitution, the RAD21 antibody can be stored for up to one month at 4°C. For long-term, aliquot and store at -20°C. Avoid repeated freezing and thawing.