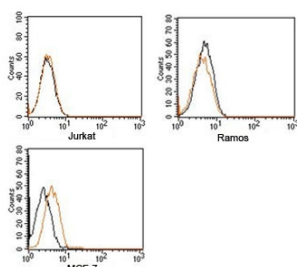


Rabbit IgG Isotype Control Polyclonal Antibody PE Conjugate (N1001PE)

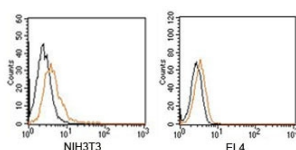
Catalog No.	Formulation	Size
N1001PE-100UG	0.5 mg/ml antibody in PBS with 0.05% sodium azide	100 ug
N1001PE-25UG	0.5 mg/ml antibody in PBS with 0.05% sodium azide	25 ug

[Bulk quote request](#)

Species Reactivity	NA
Format	PE Conjugate
Clonality	Polyclonal (rabbit origin)
Isotype	Rabbit IgG
Purity	Protein A Affinity Chromatography
Buffer	1X PBS, pH 7.4
Gene ID	NA
Applications	Flow Cytometry : assay dependent Immunohistochemistry : assay dependent Immunofluorescence : assay dependent
Limitations	This Rabbit IgG isotype control antibody is available for research use only.



FACS testing of Rabbit IgG isotype control antibody PE conjugate on human samples.
Black=cells alone, orange= isotype control antibody



FACS testing of Rabbit IgG isotype control antibody PE conjugate on mouse samples.
Black=cells alone, orange= isotype control antibody

Description

Isotype control antibodies are negative controls used to measure non-specific binding or background levels of a primary antibody in different cell types. They are not specific to any target in a cell, yet retain all non-specific characteristics of the antibodies they control.

Application Notes

Generally to be used at the same concentration as the sample being controlled for.

Immunogen

This is purified naive rabbit sera and as such there was no immunogen.

Storage

Store the Rabbit IgG isotype control antibody at 4°C. Do not freeze; protect from light.

Alternate Names

Isotype control