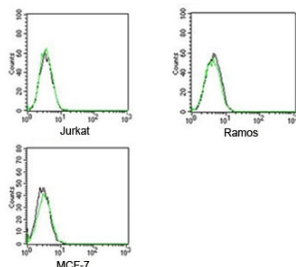


## Rabbit IgG Isotype Control Polyclonal Antibody FITC Conjugate (N1001FITC)

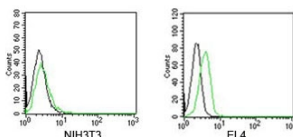
Catalog No.	Formulation	Size
N1001FITC-100UG	0.5 mg/ml antibody in PBS with 0.05% sodium azide	100 ug
N1001FITC-25UG	0.5 mg/ml antibody in PBS with 0.05% sodium azide	25 ug

[Bulk quote request](#)

Species Reactivity	NA
Format	FITC Conjugate
Clonality	Polyclonal (rabbit origin)
Isotype	Rabbit IgG
Purity	Protein A Affinity Chromatography
Buffer	1X PBS, pH 7.4
Gene ID	NA
Applications	Flow Cytometry : assay dependent Immunohistochemistry : assay dependent Immunofluorescence : assay dependent
Limitations	This <b>rabbit isotype control antibody</b> is available for research use only.



FACS testing of Rabbit IgG isotype control antibody FITC conjugate on human samples.  
Black=cells alone, green= isotype control antibody



FACS testing of Rabbit IgG isotype control antibody FITC conjugate on mouse samples.  
Black=cells alone, green= isotype control antibody

## Description

Isotype control antibodies are negative controls used to measure non-specific binding or background levels of a primary antibody in different cell types. They are not specific to any target in a cell, yet retain all non-specific characteristics of the antibodies they control.

## Application Notes

Generally to be used at the same concentration as the sample being controlled for.

## Immunogen

This is purified naive rabbit sera and as such there was no immunogen.

## Storage

Store the Rabbit IgG isotype control antibody at 4oC. Do not freeze; protect from light.

## Alternate Names

Isotype control