

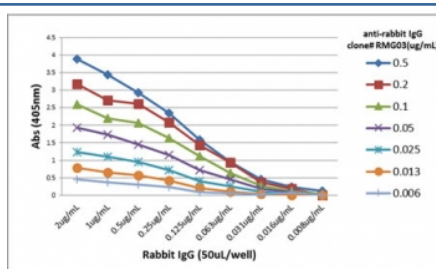
## Rabbit IgG Antibody [clone RMG03] (R20478)

Catalog No.	Formulation	Size
R20478-100UG	1 mg/ml in PBS with 50% glycerol, 1% BSA and 0.09% sodium azide	100 ug

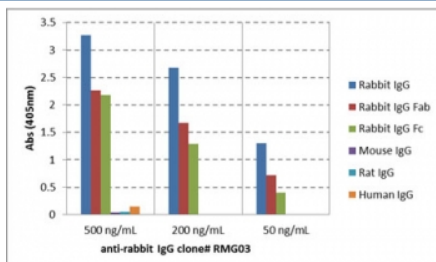
Recombinant GOAT MONOCLONAL

[Bulk quote request](#)

Availability	1-3 business days
Species Reactivity	Rabbit
Format	Purified
Clonality	Recombinant Goat Monoclonal
Isotype	Goat IgG
Clone Name	RMG03
Purity	Protein A purified from animal origin-free supernatant
Applications	ELISA : 0.01ug/ml-0.5ug/ml Western Blot : 0.1ug/ml-0.5ug/ml
Limitations	This recombinant Rabbit IgG antibody is available for research use only.



A titer ELISA of rabbit IgG. The plate was coated with different amounts of rabbit IgG. A serial dilution of the recombinant Rabbit IgG antibody was used as the primary antibody. An alkaline phosphatase conjugated anti-goat IgG as the secondary antibody.



ELISA of IgGs from different species shows recombinant Rabbit IgG antibody reacts to rabbit IgG; no cross reactivity with human IgG, rat IgG, or mouse IgG. The plate was coated with 50 ng/well of different IgG. 500 ng/mL, 200 ng/mL, or 50 ng/mL of RMG03 was used as the primary antibody. An alkaline phosphatase conjugated anti-goat IgG as the secondary antibody.

## Description

This antibody reacts to Rabbit IgG. No cross reactivity with human IgG, rat IgG, or mouse IgG.

## Application Notes

The stated application concentrations are suggested starting points. Titration of the recombinant Rabbit IgG antibody may be required due to differences in protocols and secondary/substrate sensitivity.

## Immunogen

Rabbit IgG was used as the immunogen for the Rabbit IgG antibody.

## Storage

Store the recombinant Rabbit IgG antibody at -20oC.