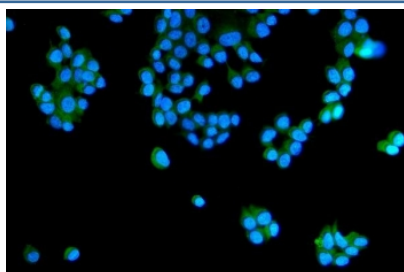


RAB5A/B/C Antibody (RQ7003)

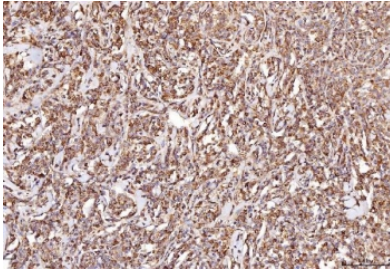
Catalog No.	Formulation	Size
RQ7003	0.5mg/ml if reconstituted with 0.2ml sterile DI water	100 ug

Bulk quote request

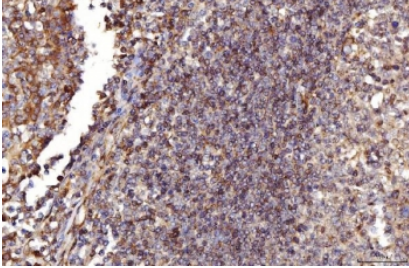
Availability	1-3 business days
Species Reactivity	Human, Mouse, Rat
Format	Antigen affinity purified
Clonality	Polyclonal (rabbit origin)
Isotype	Rabbit IgG
Purity	Antigen affinity purified
Buffer	Lyophilized from 1X PBS with 2% Trehalose
UniProt	P20339, P61020, P51148
Localization	Cytoplasmic
Applications	Western Blot : 0.5-1 ug/ml Immunohistochemistry (FFPE) : 2-5ug/ml Immunofluorescence : 5ug/ml Direct ELISA : 0.1-0.5ug/ml
Limitations	This RAB5A/B/C antibody is available for research use only.



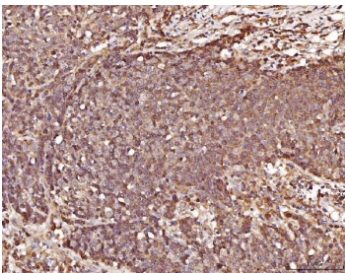
Immunofluorescent staining of FFPE human MCF7 cells with RAB5A/B/C antibody (green) and DAPI nuclear stain (blue). HIER: steam section in pH6 citrate buffer for 20 min.



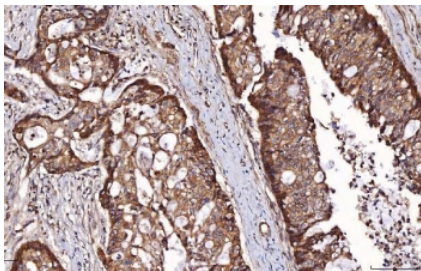
IHC staining of FFPE human lymphoma tissue with RAB5A/B/C antibody. HIER: boil tissue sections in pH8 EDTA for 20 min and allow to cool before testing.



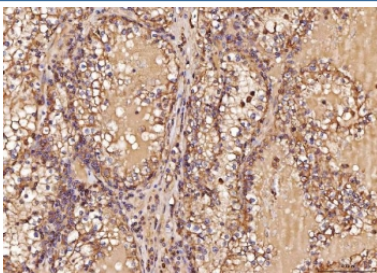
IHC staining of FFPE human tonsil tissue with RAB5A/B/C antibody. HIER: boil tissue sections in pH8 EDTA for 20 min and allow to cool before testing.



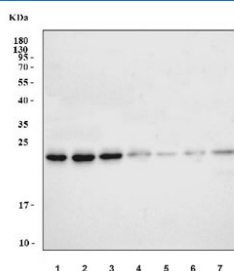
IHC staining of FFPE human lung cancer tissue with RAB5A/B/C antibody. HIER: boil tissue sections in pH8 EDTA for 20 min and allow to cool before testing.



IHC staining of FFPE human adenocarcinoma of the right colon tissue with RAB5A/B/C antibody. HIER: boil tissue sections in pH8 EDTA for 20 min and allow to cool before testing.



IHC staining of FFPE human renal cell carcinoma tissue with RAB5A/B/C antibody. HIER: boil tissue sections in pH8 EDTA for 20 min and allow to cool before testing.



Western blot testing of 1) human U-87 MG, 2) human MCF7, 3) human U-251, 4) human HL60, 5) rat kidney, 6) rat testis and 7) mouse kidney tissue lysate with RAB5A/B/C antibody. Predicted molecular weight: 23-25 kDa.

Description

Members of the Rab protein family are small GTPases of the Ras superfamily that are thought to ensure fidelity in the process of docking and/or fusion of vesicles with their correct acceptor compartment.

Application Notes

Optimal dilution of the RAB5A/B/C antibody should be determined by the researcher.

Immunogen

Recombinant human RAB5A/B/C protein (amino acids M1-N215) was used as the immunogen for the RAB5A/B/C antibody.

Storage

After reconstitution, the RAB5A/B/C antibody can be stored for up to one month at 4°C. For long-term, aliquot and store at -20°C. Avoid repeated freezing and thawing.