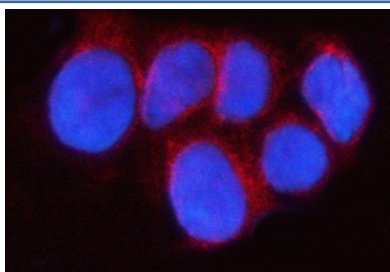


RAB43 Antibody / Ras-related protein Rab-43 (RQ7996)

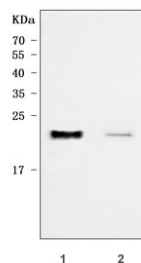
Catalog No.	Formulation	Size
RQ7996	0.5mg/ml if reconstituted with 0.2ml sterile DI water	100 ug

Bulk quote request

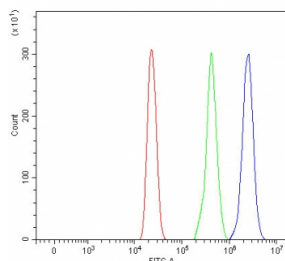
Availability	1-3 business days
Species Reactivity	Human
Format	Antigen affinity purified
Clonality	Polyclonal (rabbit origin)
Isotype	Rabbit IgG
Purity	Antigen affinity purified
Buffer	Lyophilized from 1X PBS with 2% Trehalose
UniProt	Q86YS6
Localization	Cytoplasm
Applications	Western Blot : 0.5-1ug/ml Immunofluorescence : 5ug/ml Flow Cytometry : 1-3ug/million cells Direct ELISA : 0.1-0.5ug/ml
Limitations	This RAB43 antibody is available for research use only.



Immunofluorescent staining of FFPE human MCF7 cells with RAB43 antibody (red) and DAPI nuclear stain (blue). HIER: steam section in pH6 citrate buffer for 20 min.



Western blot testing of human 1) HepG2 and 2) 293T cell lysate with RAB43 antibody. Predicted molecular weight ~23 kDa.



Flow cytometry testing of fixed and permeabilized human HL60 cells with RAB43 antibody at 1ug/million cells (blocked with goat sera); Red=cells alone, Green=isotype control, Blue= RAB43 antibody.

Description

Ras-related GTP-binding protein 43 (RAB43) is a member of the Ras superfamily. RAB43 is mainly located in endoplasmic reticulum and Golgi, and plays a role as a key regulator of vesicle movement, signal transduction and tethering membrane events in membrane trafficking.

Application Notes

Optimal dilution of the RAB43 antibody should be determined by the researcher.

Immunogen

E. coli-derived recombinant human protein (amino acids Q14-E206) was used as the immunogen for the RAB43 antibody.

Storage

After reconstitution, the RAB43 antibody can be stored for up to one month at 4°C. For long-term, aliquot and store at -20°C. Avoid repeated freezing and thawing.