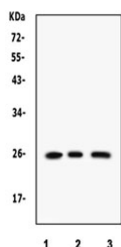


RAB14 Antibody (R32156)

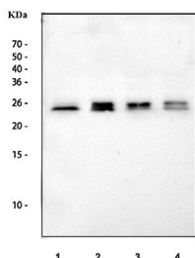
Catalog No.	Formulation	Size
R32156	0.5mg/ml if reconstituted with 0.2ml sterile DI water	100 ug

[Bulk quote request](#)

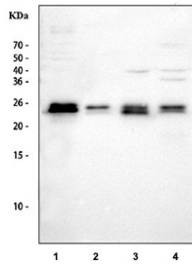
Availability	1-3 business days
Species Reactivity	Human, Mouse, Rat
Format	Antigen affinity purified
Clonality	Polyclonal (rabbit origin)
Isotype	Rabbit IgG
Purity	Antigen affinity
Buffer	Lyophilized from 1X PBS with 2% Trehalose
UniProt	P61106
Localization	Cytoplasm
Applications	Western Blot : 0.5-1ug/ml Immunohistochemistry (FFPE) : 2-5ug/ml Immunofluorescence : 5ug/ml
Limitations	This RAB14 antibody is available for research use only.



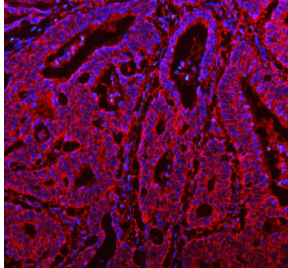
Western blot testing of 1) rat brain, 2) human Raji and 3) human SMMC lysate with RAB14 antibody. Expected/observed molecular weight ~24 kDa.



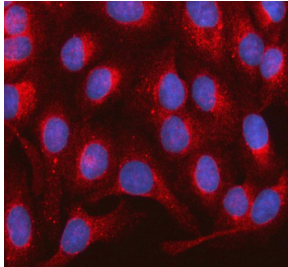
Western blot testing of human 1) HeLa, 2) SiHa, 3) RT4 and 4) MCF7 cell lysate with RAB14 antibody. Expected/observed molecular weight ~24 kDa.



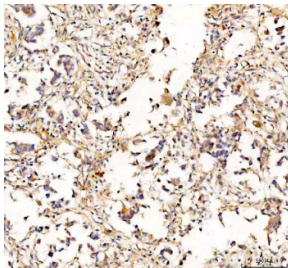
Western blot testing of 1) rat brain, 2) rat PC-12, 3) mouse brain and 4) mouse stomach tissue lysate with RAB14 antibody. Expected/observed molecular weight ~24 kDa.



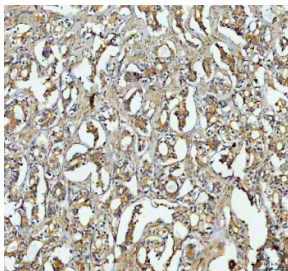
Immunofluorescent staining of FFPE human colon cancer tissue with RAB14 antibody (red) and DAPI nuclear stain (blue). HIER: steam section in pH8 EDTA buffer for 20 min.



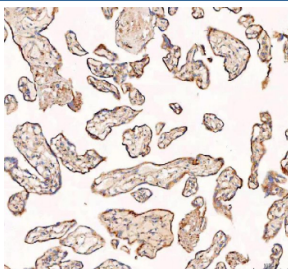
Immunofluorescent staining of FFPE human U-2 OS cells with RAB14 antibody (red) and DAPI nuclear stain (blue). HIER: steam section in pH6 citrate buffer for 20 min.



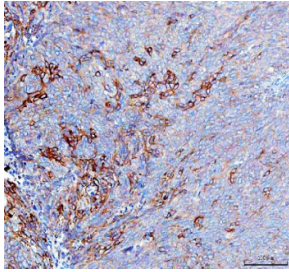
IHC staining of FFPE human breast cancer tissue with RAB14 antibody, HRP-labeled secondary and DAB substrate. HIER: boil tissue sections in pH8 EDTA for 20 min and allow to cool before testing.



IHC staining of FFPE human ovarian cancer tissue with RAB14 antibody, HRP-labeled secondary and DAB substrate. HIER: boil tissue sections in pH8 EDTA for 20 min and allow to cool before testing.



IHC staining of FFPE human placental tissue with RAB14 antibody, HRP-labeled secondary and DAB substrate. HIER: boil tissue sections in pH8 EDTA for 20 min and allow to cool before testing.



IHC staining of FFPE human non-keratotic squamous cell carcinoma of the cervix tissue with RAB14 antibody, HRP-labeled secondary and DAB substrate. HIER: boil tissue sections in pH8 EDTA for 20 min and allow to cool before testing.