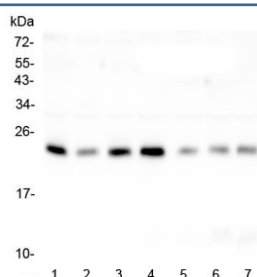


## RAB11B Antibody (RQ4926)

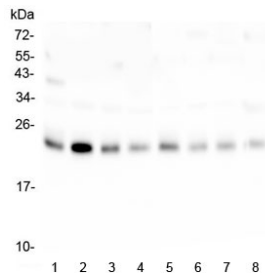
Catalog No.	Formulation	Size
RQ4926	0.5mg/ml if reconstituted with 0.2ml sterile DI water	100 ug

**Bulk quote request**

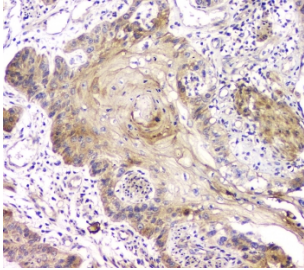
<b>Availability</b>	1-3 business days
<b>Species Reactivity</b>	Human, Mouse, Rat
<b>Format</b>	Antigen affinity purified
<b>Clonality</b>	Polyclonal (rabbit origin)
<b>Isotype</b>	Rabbit IgG
<b>Purity</b>	Antigen affinity purified
<b>Buffer</b>	Lyophilized from 1X PBS with 2% Trehalose and 0.025% sodium azide
<b>UniProt</b>	Q15907
<b>Localization</b>	Cytoplasmic
<b>Applications</b>	Western Blot : 0.5-1ug/ml Immunohistochemistry (FFPE) : 1-2ug/ml Flow Cytometry : 1-3ug/10 <sup>6</sup> cells Immunofluorescence : 2-4ug/ml
<b>Limitations</b>	This RAB11B antibody is available for research use only.



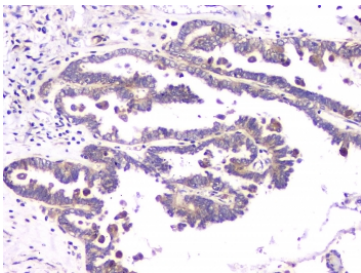
Western blot testing of human 1) placenta, 2) A549, 3) U-87 MG, 4) PC-3, 5) HeLa, 6) Caco-2 and 7) HL-60 lysate with RAB11B antibody at 0.5ug/ml. Predicted molecular weight ~24 kDa.



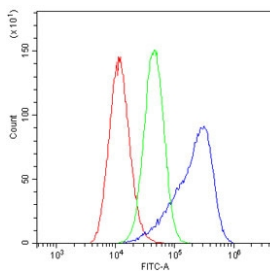
Western blot testing of 1) rat spleen, 2) rat lung, 3) rat ovary, 4) rat kidney, 5) mouse lung, 6) mouse ovary, 7) mouse kidney and 8) mouse SP2/0 lysate with RAB11B antibody at 0.5ug/ml. Predicted molecular weight ~24 kDa.



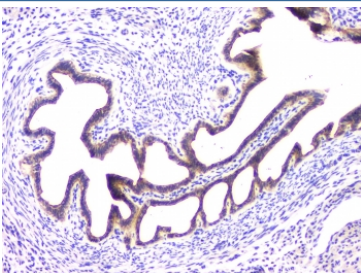
IHC staining of FFPE human esophageal squamous cancer with RAB11B antibody at 1ug/ml. HIER: boil tissue sections in pH6, 10mM citrate buffer, for 10-20 min and allow to cool before testing.



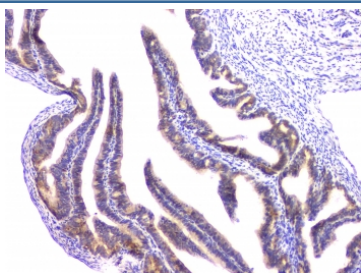
IHC staining of FFPE human ovarian cancer with RAB11B antibody at 1ug/ml. HIER: boil tissue sections in pH6, 10mM citrate buffer, for 10-20 min and allow to cool before testing.



Flow cytometry testing of human A549 cells with RAB11B antibody at 1ug/10<sup>6</sup> cells (blocked with goat sera); Red=cells alone, Green=isotype control, Blue= RAB11B antibody.



IHC staining of FFPE mouse ovary with RAB11B antibody at 1ug/ml. HIER: boil tissue sections in pH6, 10mM citrate buffer, for 10-20 min and allow to cool before testing.



IHC staining of FFPE rat ovary with RAB11B antibody at 1ug/ml. HIER: boil tissue sections in pH6, 10mM citrate buffer, for 10-20 min and allow to cool before testing.



Immunofluorescent staining of FFPE human A431 cells with RAB11B antibody (green) and DAPI nuclear stain (blue). HIER: steam section in pH6 citrate buffer for 20 min.

## Description

Ras-related protein Rab-11B is a protein that in humans is encoded by the RAB11B gene. It is mapped to 19p13.2. The Ras superfamily of small GTP-binding proteins, which includes the Ras, Ral, Rho, Rap, and Rab families, is involved in controlling a diverse set of essential cellular functions. The Rab family, including RAB11B, appears to play a critical role in regulating exocytotic and endocytotic pathways.

## Application Notes

Optimal dilution of the RAB11B antibody should be determined by the researcher.

## Immunogen

Amino acids QKQIADRAAHDESPGNNVVDISVPPTTDGQKPNKLQCC from the human protein were used as the immunogen for the RAB11B antibody.

## Storage

After reconstitution, the RAB11B antibody can be stored for up to one month at 4oC. For long-term, aliquot and store at -20oC. Avoid repeated freezing and thawing.