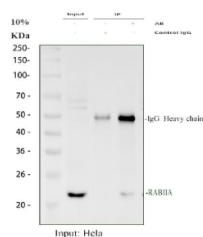


RAB11A Antibody (R31406)

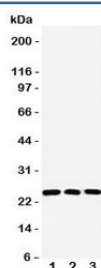
Catalog No.	Formulation	Size
R31406	0.5mg/ml if reconstituted with 0.2ml sterile DI water	100 ug

Bulk quote request

Availability	1-2 days
Species Reactivity	Human, Mouse, Rat
Format	Antigen affinity purified
Clonality	Polyclonal (rabbit origin)
Isotype	Rabbit IgG
Purity	Antigen affinity
Buffer	Lyophilized from 1X PBS with 2.5% BSA and 0.025% sodium azide/thimerosal
UniProt	P62491
Applications	Western Blot : 0.5-1ug/ml Immunoprecipitation : 2ug per 500ug of lysate
Limitations	This RAB11A antibody is available for research use only.



Immunoprecipitation of RAB11A protein from 500ug of human HeLa whole cell lysate with 2ug of RAB11A antibody.



Western blot testing of RAB11A antibody and Lane 1: human HeLa; 2: mouse NIH3T3; 3: human A431 lysate. Expected molecular weight ~24 kDa.

