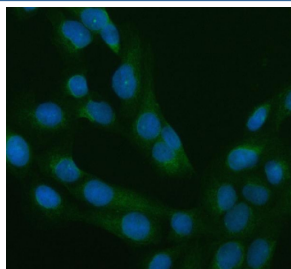


RAB11 Antibody / Rab11A (R32159)

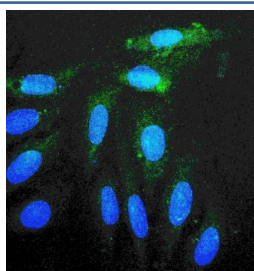
Catalog No.	Formulation	Size
R32159	0.5mg/ml if reconstituted with 0.2ml sterile DI water	100 ug

Bulk quote request

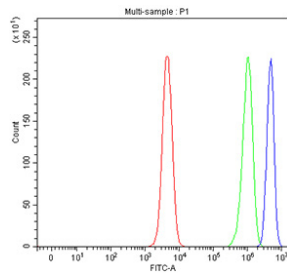
Availability	1-3 business days
Species Reactivity	Human, Mouse, Rat
Format	Antigen affinity purified
Clonality	Polyclonal (rabbit origin)
Isotype	Rabbit IgG
Purity	Antigen affinity
Buffer	Lyophilized from 1X PBS with 2% Trehalose
UniProt	P62491
Localization	Cytoplasm, cell membrane
Applications	Western Blot : 0.5-1ug/ml Immunofluorescence : 5ug/ml Flow Cytometry : 1-3ug/million cells
Limitations	This RAB11 antibody is available for research use only.



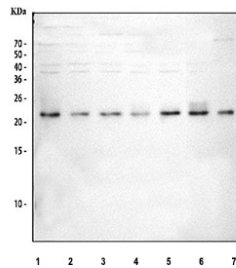
IF/ICC staining of FFPE human U-2 OS cells with RAB11 antibody (green) at 5ug/ml and DAPI nuclear stain (blue). HIER: steam section in pH6 citrate buffer for 20 min.



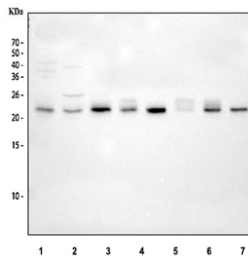
IF/ICC staining of FFPE human A549 cells with RAB11 antibody (green) at 2ug/ml and DAPI nuclear stain (blue). HIER: steam section in pH6 citrate buffer for 20 min.



Flow cytometry testing of fixed and permeabilized human SH-SY5Y cells with RAB11 antibody at 1ug/10⁶ cells (blocked with goat sera); Red=cells alone, Green=isotype control, Blue= RAB11 antibody.



Western blot testing of human 1) 293T, 2) SH-SY5Y, 3) HeLa, 4) MCF7, 5) A549, 6) RT4 and 7) HaCaT cell lysate with RAB11 antibody. Predicted molecular weight ~24 kDa.



Western blot testing of human 1) rat brain, 2) rat spleen, 3) rat lung, 4) rat PC-12, 5) mouse brain, 6) mouse spleen, 7) mouse lung and 8) mouse NIH 3T3 cell lysate with RAB11 antibody. Predicted molecular weight ~24 kDa.