

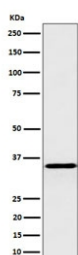
Pyrophosphatase 1 Antibody / PPA1 / Inorganic pyrophosphatase [clone 29P54] (RQ8709)

Catalog No.	Formulation	Size
RQ8709	Antibody in PBS with 0.02% sodium azide, 50% glycerol and 0.4-0.5mg/ml BSA	100 ul

Recombinant **RABBIT MONOCLONAL**

[Bulk quote request](#)

Availability	1-3 days
Species Reactivity	Human
Format	Purified
Clonality	Recombinant Rabbit Monoclonal
Isotype	Rabbit IgG
Clone Name	29P54
Purity	Affinity chromatography
UniProt	Q15181
Applications	Western Blot : 1:500-1:2000
Limitations	This Pyrophosphatase 1 antibody is available for research use only.



Western blot testing of human HepG2 cell lysate with Pyrophosphatase 1 antibody.
Predicted molecular weight ~33 kDa.

Description

PPases catalyze the hydrolysis of pyrophosphate to inorganic phosphate, which is important for the phosphate metabolism of cells.

Application Notes

Optimal dilution of the Pyrophosphatase 1 antibody should be determined by the researcher.

Immunogen

A synthetic peptide specific to human Inorganic pyrophosphatase protein was used as the immunogen for the Pyrophosphatase 1 antibody.

Storage

Store the Pyrophosphatase 1 antibody at -20oC.