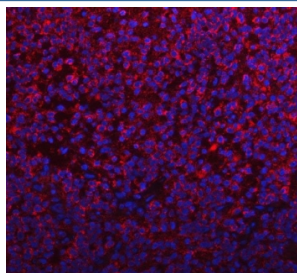


PYCR1 Antibody / Pyrroline-5-carboxylate reductase 1 (RQ8158)

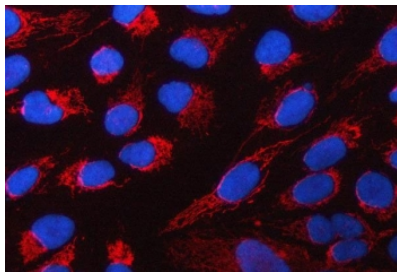
Catalog No.	Formulation	Size
RQ8158	0.5mg/ml if reconstituted with 0.2ml sterile DI water	100 ug

Bulk quote request

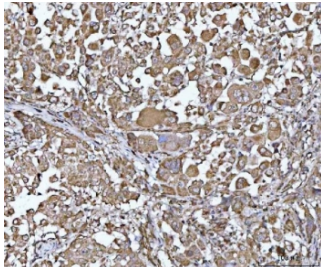
Availability	1-3 business days
Species Reactivity	Human
Format	Antigen affinity purified
Clonality	Polyclonal (rabbit origin)
Isotype	Rabbit IgG
Purity	Antigen affinity purified
Buffer	Lyophilized from 1X PBS with 2% Trehalose
UniProt	P32322
Localization	Cytoplasm (Mitochondria)
Applications	Western Blot : 0.5-1ug/ml Immunohistochemistry (FFPE) : 2-5ug/ml Immunofluorescence : 5ug/ml Flow Cytometry : 1-3ug/million cells Direct ELISA : 0.1-0.5ug/ml
Limitations	This PYCR1 antibody is available for research use only.



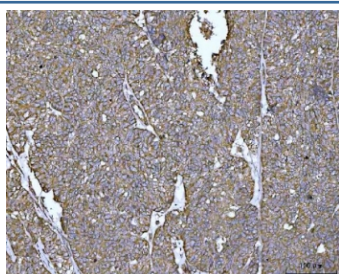
Immunofluorescent staining of FFPE human glioma tissue with PYCR1 antibody (red) and DAPI nuclear stain (blue). HIER: steam section in pH8 EDTA buffer for 20 min.



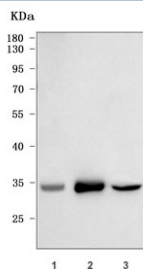
Immunofluorescent staining of FFPE human U-2 OS cells with PYCR1 antibody (red) and DAPI nuclear stain (blue). HIER: steam section in pH6 citrate buffer for 20 min.



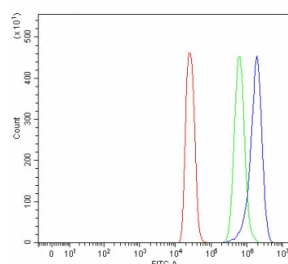
IHC staining of FFPE human lung cancer tissue with PYCR1 antibody. HIER: boil tissue sections in pH8 EDTA for 20 min and allow to cool before testing.



IHC staining of FFPE human ovarian cancer tissue with PYCR1 antibody. HIER: boil tissue sections in pH8 EDTA for 20 min and allow to cool before testing.



Western blot testing of human 1) SW-620, 2) PANC-1 and 3) 293T cell lysate with PYCR1 antibody. Predicted molecular weight: 33-36 kDa (multiple isoforms).



Flow cytometry testing of fixed and permeabilized human 293T cells with PYCR1 antibody at 1ug/million cells (blocked with goat sera); Red=cells alone, Green=isotype control, Blue= PYCR1 antibody.

Description

Pyrroline-5-carboxylate reductase 1, mitochondrial is an enzyme that in humans is encoded by the PYCR1 gene. This gene encodes an enzyme that catalyzes the NAD(P)H-dependent conversion of pyrroline-5-carboxylate to proline. This enzyme may also play a physiologic role in the generation of NADP(+) in some cell types. The protein forms a homopolymer and localizes to the mitochondrion. Alternative splicing results in multiple transcript variants.

Application Notes

Optimal dilution of the PYCR1 antibody should be determined by the researcher.

Immunogen

E. coli-derived recombinant human protein (amino acids Q10-D319) was used as the immunogen for the PYCR1 antibody.

Storage

After reconstitution, the PYCR1 antibody can be stored for up to one month at 4oC. For long-term, aliquot and store at -20oC. Avoid repeated freezing and thawing.