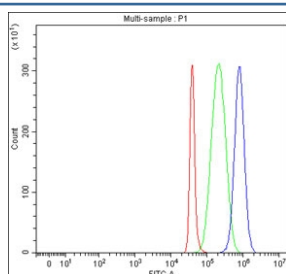


Puratrophin 1 Antibody / PLEKHG4 (RQ8823)

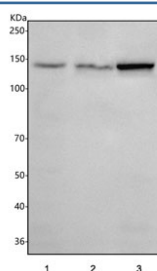
Catalog No.	Formulation	Size
RQ8823	0.5mg/ml if reconstituted with 0.2ml sterile DI water	100 ug

Bulk quote request

Availability	1-3 days
Species Reactivity	Human
Format	Antigen affinity purified
Clonality	Polyclonal (rabbit origin)
Isotype	Rabbit IgG
Purity	Antigen affinity chromatography
Buffer	Lyophilized from 1X PBS with 2% Trehalose
UniProt	Q58EX7
Applications	Western Blot : 1-2ug/ml Flow Cytometry : 1-3ug/million cells ELISA : 0.1-0.5ug/ml
Limitations	This Puratrophin 1 antibody is available for research use only.



Flow cytometry testing of fixed and permeabilized human SH-SY5Y cells with Puratrophin 1 antibody at 1ug/million cells (blocked with goat sera); Red=cells alone, Green=isotype control, Blue= Puratrophin 1 antibody.



Western blot testing of human 1) 293T, 2) Jurkat and 3) HEL cell lysate with Puratrophin 1 antibody. Predicted molecular weight ~131 kDa.

Description

Puratrophin 1 is a protein that in humans is encoded by the PLEKHG4 gene. The protein encoded by this gene can function as a guanine nucleotide exchange factor (GEF) and may play a role in intracellular signaling and cytoskeleton dynamics at the Golgi apparatus. Polymorphisms in the region of this gene have been found to be associated with spinocerebellar ataxia in some study populations. Alternative splicing results in multiple transcript variants.

Application Notes

Optimal dilution of the Puratrophin 1 antibody should be determined by the researcher.

Immunogen

An E.coli-derived human recombinant protein (amino acids R22-E1140) was used as the immunogen for the Puratrophin 1 antibody.

Storage

After reconstitution, the Puratrophin 1 Antibody can be stored for up to one month at 4oC. For long-term, aliquot and store at -20oC. Avoid repeated freezing and thawing.