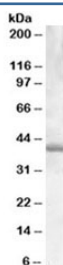


PU.1 Antibody / SPI1 (R33547)

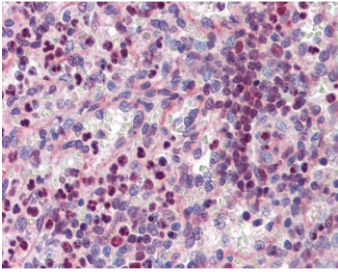
Catalog No.	Formulation	Size
R33547-100UG	0.5 mg/ml in 1X TBS, pH7.3, with 0.5% BSA (US sourced) and 0.02% sodium azide	100 ug

[Bulk quote request](#)

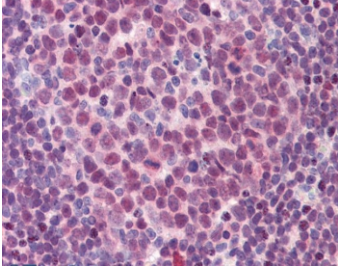
Availability	1-3 business days
Species Reactivity	Human
Predicted Reactivity	Rat
Format	Antigen affinity purified
Clonality	Polyclonal (goat origin)
Isotype	Goat Ig
Purity	Antigen affinity
Gene ID	6688
Localization	Nuclear
Applications	Western Blot : 0.03-0.1ug/ml IHC (FFPE) : 3.75ug/ml ELISA (peptide) LOD : 1:32000
Limitations	This PU.1 antibody is available for research use only.



Western blot testing of Daudi lysate with PU.1 antibody at 0.03ug/ml. Predicted molecular weight ~31 kDa but routinely observed at ~40 kDa.



IHC testing of FFPE human spleen tissue with PU.1 antibody at 3.75ug/ml. Required HIER: steamed antigen retrieval with pH6 citrate buffer; AP-staining.



IHC testing of FFPE human colon (lymphoid aggregate) tissue with PU.1 antibody at 3.75ug/ml. Required HIER: steamed antigen retrieval with pH6 citrate buffer; AP-staining.

Description

Additional name(s) for this target protein: Hematopoietic transcription factor PU.1; SPI1

Application Notes

Optimal dilution of the PU.1 antibody should be determined by the researcher.

Immunogen

Amino acids DLYQRQTHEYY were used as the immunogen for this PU.1 antibody.

Storage

Aliquot and store the PU.1 antibody at -20oC.