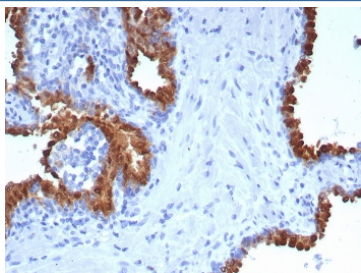


## PTPRU Antibody / Protein Tyrosine Phosphatase Receptor Type U [clone PTPRU/7616] (V4686)

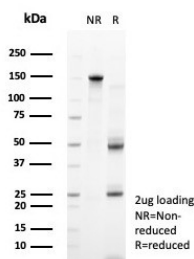
Catalog No.	Formulation	Size
V4686-100UG	0.2 mg/ml in 1X PBS with 0.1 mg/ml BSA (US sourced), 0.05% sodium azide	100 ug
V4686-20UG	0.2 mg/ml in 1X PBS with 0.1 mg/ml BSA (US sourced), 0.05% sodium azide	20 ug
V4686SAF-100UG	1 mg/ml in 1X PBS; BSA free, sodium azide free	100 ug

### Bulk quote request

Availability	1-3 business days
Species Reactivity	Human
Format	Purified
Clonality	Monoclonal (mouse origin)
Isotype	Mouse IgG2, kappa
Clone Name	PTPRU/7616
Purity	Protein A/G affinity
UniProt	Q92729
Localization	Cell junction, Cell membrane
Applications	Immunohistochemistry (FFPE) : 1-2ug/ml for 30 min at RT
Limitations	This PTPRU antibody is available for research use only.



IHC staining of FFPE human prostate tissue with PTPRU antibody (clone PTPRU/7616).  
 HIER: boil tissue sections in pH 9 10mM Tris with 1mM EDTA for 20 min and allow to cool before testing.



SDS-PAGE analysis of purified, BSA-free PTPRU antibody (clone PTPRU/7616) as confirmation of integrity and purity.

## Description

Protein tyrosine phosphatases, or PTPs, are type I transmembrane proteins, membrane associated proteins or proteins localized in nuclei. Examples of transmembrane PTPs are LAR, PTPa, PTPb, PTPg, PTPd, PTPe, PTPz, PTPk, PTPm and PTPy. Transmembrane PTPs play diverse roles in a variety of cellular processes during development and in adult tissues. PTPy, also known as PTPRU, FMI, PCP-2, PTP-J, PTPRO, PTP-PI, PTPPSI or GLEPP1, is a receptor-type PTP containing a transmembrane region, two intracellular tandem catalytic domains, and an extracellular region with Ig-like and fibronectin type III-like repeats and a MAM (meprin-A5 antigen-PTPm) domain. PTPy localizes to adheren junctions and is capable of binding and dephosphorylating b-catenin thereby functioning as a negative regulator of b-catenin signaling. In addition, PTPy may function as a tumor suppressor, as its expression is silenced in a variety of tumors via methylation of its promoter.

## Application Notes

Optimal dilution of the PTPRU antibody should be determined by the researcher.

## Immunogen

A recombinant partial protein sequence (within amino acids 1-200) from the human protein was used as the immunogen for the PTPRU antibody.

## Storage

Aliquot the PTPRU antibody and store frozen at -20oC or colder. Avoid repeated freeze-thaw cycles.