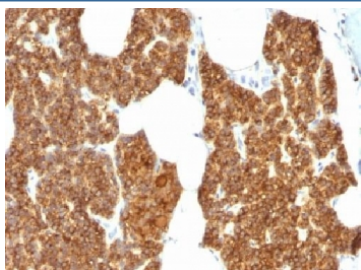


## PTH Antibody / N-Terminal (V3375)

Catalog No.	Formulation	Size
V3375-100UG	0.2 mg/ml in 1X PBS with 0.1 mg/ml BSA (US sourced) and 0.05% sodium azide	100 ug
V3375-20UG	0.2 mg/ml in 1X PBS with 0.1 mg/ml BSA (US sourced) and 0.05% sodium azide	20 ug
V3375SAF-100UG	1 mg/ml in 1X PBS; BSA free, sodium azide free	100 ug

**Bulk quote request**

<b>Availability</b>	1-3 business days
<b>Species Reactivity</b>	Human
<b>Format</b>	Purified
<b>Clonality</b>	Polyclonal (rabbit origin)
<b>Isotype</b>	Rabbit IgG
<b>Purity</b>	Protein A affinity chromatography
<b>UniProt</b>	P01270
<b>Localization</b>	Cytoplasmic and secreted
<b>Applications</b>	Immunohistochemistry (FFPE) : 0.5-1ug/ml for 30 min at RT
<b>Limitations</b>	This PTH antibody is available for research use only.



IHC testing of FFPE human parathyroid gland stained with PTH antibody. Required HIER: steam sections in 10mM citrate buffer, pH 6.0, for 10-20 min.

## Description

PTH/Parathyroid hormone is a hormone produced by the parathyroid gland that regulates the concentration of calcium and phosphorus in extracellular fluid. This hormone elevates blood Ca<sup>2+</sup> levels by dissolving the salts in bone and preventing their renal excretion. It is produced in the parathyroid gland as an 84 amino acid single chain polypeptide. It

can also be secreted as N-terminal truncated fragments or C-terminal fragments after intracellular degradation, as in case of hypercalcemia. Defects in this gene are a cause of familial isolated hypoparathyroidism (FIH); also called autosomal dominant hypoparathyroidism or autosomal dominant hypocalcemia. FIH is characterized by hypocalcemia and hyperphosphatemia due to inadequate secretion of parathyroid hormone. Symptoms are seizures, tetany and cramps. FIH exist both as autosomal dominant and recessive forms of hypoparathyroidism.

## **Application Notes**

Optimal dilution of the PTH antibody should be determined by the researcher.

## **Immunogen**

A synthetic peptide from the N-terminal region of human Parathyroid hormone was used as the immunogen for the PTH antibody.

## **Storage**

Store the PTH antibody at 2-8oC (with azide) or aliquot and store at -20oC or colder (without azide).