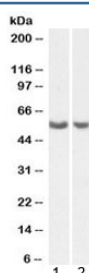


## PTGIS Antibody / CYP8A1 (R36431)

Catalog No.	Formulation	Size
R36431-100UG	0.5 mg/ml in 1X TBS, pH7.3, with 0.5% BSA (US sourced) and 0.02% sodium azide	100 ug

[Bulk quote request](#)

Availability	1-3 business days
Species Reactivity	Human
Predicted Reactivity	Pig
Format	Antigen affinity purified
Clonality	Polyclonal (goat origin)
Isotype	Goat Ig
Purity	Antigen affinity
Gene ID	5740
Applications	Western Blot : 0.5-1.5ug/ml ELISA (peptide) LOD : 1:128000
Limitations	This PTGIS antibody is available for research use only.



Western blot testing of human 1) lung and 2) ovary lysate with PTGIS antibody at 0.5ug/ml. Expected molecular weight: ~57 kDa.

## Description

Additional name(s) for this target protein: Prostaglandin I2 synthase; Cytochrome P450, family 8, subfamily A, polypeptide 1

## Application Notes

Optimal dilution of the PTGIS antibody should be determined by the researcher.

## Immunogen

Amino acids RRAHRSKWLES were used as the immunogen for this PTGIS antibody.

## **Storage**

Aliquot and store the PTGIS antibody at -20oC.