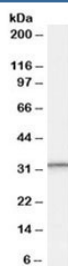


## PSME1 Antibody (R34541)

Catalog No.	Formulation	Size
R34541-100UG	0.5 mg/ml in 1X TBS, pH7.3, with 0.5% BSA (US sourced) and 0.02% sodium azide	100 ug

[Bulk quote request](#)

Availability	1-3 business days
Species Reactivity	Human
Predicted Reactivity	Dog, Mouse, Rat
Format	Antigen affinity purified
Clonality	Polyclonal (goat origin)
Isotype	Goat Ig
Purity	Antigen affinity
Gene ID	5720
Applications	Western Blot : 0.3-1ug/ml ELISA (peptide) LOD : 1:64000
Limitations	This PSME1 antibody is available for research use only.



Western blot testing of human peripheral blood mononucleocyte lysate with PSME1 antibody at 0.3ug/ml. Predicted molecular weight: ~29kDa.

## Description

Additional name(s) for this target protein: Proteasome activator subunit 1

## Application Notes

Optimal dilution of the PSME1 antibody should be determined by the researcher.

1. This PSME1 antibody is specific for isoform 1.

## Immunogen

Amino acids KNFEKLKKPRGETK were used as the immunogen for this PSME1 antibody.

## Storage

Aliquot and store the PSME1 antibody at -20oC.