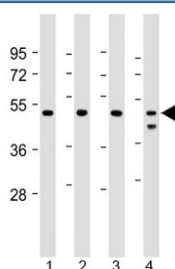


PSMC2 Antibody / Proteasome 19S S7 / MSS1 [clone 1851CT193.4.40] (F54190)

Catalog No.	Formulation	Size
F54190-0.2ML	In 1X PBS, pH 7.4, with 0.09% sodium azide	0.2 ml
F54190-0.05ML	In 1X PBS, pH 7.4, with 0.09% sodium azide	0.05 ml

[Bulk quote request](#)

Availability	1-3 business days
Species Reactivity	Human
Predicted Reactivity	Mouse, Bovine, Primate
Format	Purified
Clonality	Monoclonal (mouse origin)
Isotype	IgG1, kappa
Clone Name	1851CT193.4.40
Purity	Protein G purified
UniProt	P35998
Applications	Western Blot : 1:1000-1:2000
Limitations	This PSMC2 antibody is available for research use only.



Western blot testing of human 1) Jurkat, 2) U-2 OS, 3) HeLa and 4) MCF7 cell lysate with PSMC2 antibody at 1:2000. Predicted molecular weight ~49 kDa.

Description

The 26S protease is involved in the ATP-dependent degradation of ubiquitinated proteins. The regulatory (or ATPase) complex confers ATP dependency and substrate specificity to the 26S complex. In case of HIV-1 infection, positive modulator of Tat-mediated transactivation.

Application Notes

The stated application concentrations are suggested starting points. Titration of the PSMC2 antibody may be required due to differences in protocols and secondary/substrate sensitivity.

Immunogen

Recombinant human PSMC2 protein was used as the immunogen for the PSMC2 antibody.

Storage

Aliquot the PSMC2 antibody and store frozen at -20oC or colder. Avoid repeated freeze-thaw cycles.