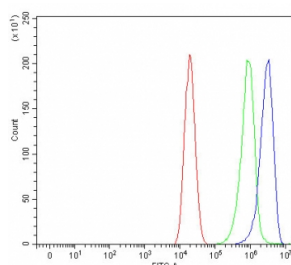


PSMB7 Antibody / Proteasome 20S beta 7 [clone 3H6C8] (RQ7689)

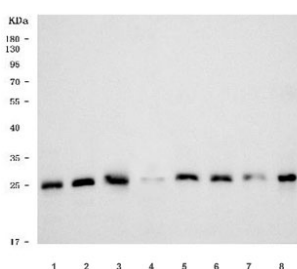
| Catalog No. | Formulation | Size |
|-------------|---|--------|
| RQ7689 | 0.5mg/ml if reconstituted with 0.2ml sterile DI water | 100 ug |

Bulk quote request

| | |
|---------------------------|---|
| Availability | 1-3 business days |
| Species Reactivity | Human, Mouse, Rat, Monkey |
| Format | Antigen affinity purified |
| Clonality | Monoclonal (mouse origin) |
| Isotype | Mouse IgG2b |
| Clone Name | 3H6C8 |
| Purity | Antigen affinity purified |
| Buffer | Lyophilized from 1X PBS with 2% Trehalose |
| UniProt | Q99436 |
| Applications | Western Blot : 0.5-1ug/ml Flow Cytometry : 1-3ug/million cells |
| Limitations | This PSMB7 antibody is available for research use only. |



Flow cytometry testing of human Caco-2 cells with PSMB7 antibody at 1ug/million cells (blocked with goat sera); Red=cells alone, Green=isotype control, Blue= PSMB7 antibody.



Western blot testing of 1) human HepG2, 2) human HeLa, 3) human PC-3, 4) monkey COS-7, 5) rat brain, 6) rat liver, 7) mouse brain and 8) mouse liver tissue lysate with PSMB7 antibody. Predicted molecular weight ~30 kDa.

Description

Proteasome subunit beta type-7 as known as 20S proteasome subunit beta-2 is a protein that in humans is encoded by the PSMB7 gene. The proteasome is a multicatalytic proteinase complex with a highly ordered ring-shaped 20S core structure. The core structure is composed of 4 rings of 28 non-identical subunits; 2 rings are composed of 7 alpha subunits and 2 rings are composed of 7 beta subunits. Proteasomes are distributed throughout eukaryotic cells at a high concentration and cleave peptides in an ATP/ubiquitin-dependent process in a non-lysosomal pathway. The encoded protein is a member of the proteasome B-type family, also known as the T1B family, and is a 20S core beta subunit in the proteasome. Expression of this catalytic subunit is downregulated by gamma interferon, and proteolytic processing is required to generate a mature subunit. A pseudogene of this gene is located on the long arm of chromosome 14.

Application Notes

Optimal dilution of the PSMB7 antibody should be determined by the researcher.

Immunogen

E. coli-derived recombinant human protein (amino acids D17-S277) was used as the immunogen for the PSMB7 antibody.

Storage

After reconstitution, the PSMB7 antibody can be stored for up to one month at 4oC. For long-term, aliquot and store at -20oC. Avoid repeated freezing and thawing.