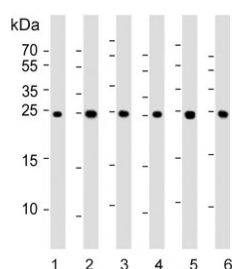


PSMA5 Antibody / Proteasome subunit alpha type 5 [clone 426CT8.5.1] (F54524)

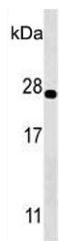
Catalog No.	Formulation	Size
F54524-0.4ML	In 1X PBS, pH 7.4, with 0.09% sodium azide	0.4 ml
F54524-0.08ML	In 1X PBS, pH 7.4, with 0.09% sodium azide	0.08 ml

[Bulk quote request](#)

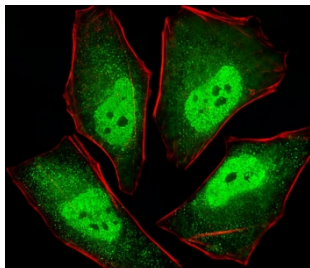
Availability	1-3 business days
Species Reactivity	Human, Mouse, Rat
Format	Purified
Clonality	Monoclonal (mouse origin)
Isotype	IgG1
Clone Name	426CT8.5.1
Purity	Protein G affinity
UniProt	P28066
Localization	Cytoplasmic, nuclear
Applications	Western Blot : 1:500-1:2000 Immunofluorescence : 1:25 Immunohistochemistry (FFPE) : 1:25
Limitations	This PSMA5 antibody is available for research use only.



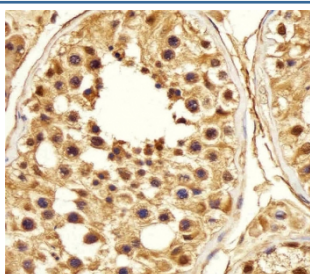
Western blot testing of human 1) liver, 2) HeLa, 3) HepG2, 4) MCF7, 5) mouse Neuro-2a and 6) rat PC-12 cell lysate with PSMA5 antibody. Predicted molecular weight ~26 kDa.



Western blot testing of human K562 cell lysate with PSMA5 antibody. Predicted molecular weight ~26 kDa.



Immunofluorescent staining of human HeLa cells with PSMA5 antibody (green) and anti-Actin (red).



IHC testing of FFPE human testis tissue with PSMA5 antibody. HIER: steam section in pH6 citrate buffer for 20 min and allow to cool prior to staining.

Description

The proteasome is a multicatalytic proteinase complex with a highly ordered ring-shaped 20S core structure. The core structure is composed of 4 rings of 28 non-identical subunits; 2 rings are composed of 7 alpha subunits and 2 rings are composed of 7 beta subunits. Proteasomes are distributed throughout eukaryotic cells at a high concentration and cleave peptides in an ATP/ubiquitin-dependent process in a non-lysosomal pathway. An essential function of a modified proteasome, the immunoproteasome, is the processing of class I MHC peptides. This gene encodes a member of the peptidase T1A family, that is a 20S core alpha subunit.

Application Notes

The stated application concentrations are suggested starting points. Titration of the PSMA5 antibody may be required due to differences in protocols and secondary/substrate sensitivity.

Immunogen

Recombinant human protein was used as the immunogen for the PSMA5 antibody.

Storage

Aliquot the PSMA5 antibody and store frozen at -20oC or colder. Avoid repeated freeze-thaw cycles.

