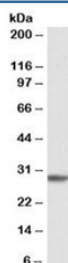


PSMA4 Antibody (R35848)

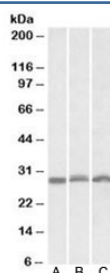
Catalog No.	Formulation	Size
R35848-100UG	0.5 mg/ml in 1X TBS, pH7.3, with 0.5% BSA (US sourced) and 0.02% sodium azide	100 ug

[Bulk quote request](#)

Availability	1-3 business days
Species Reactivity	Human, Mouse, Rat
Predicted Reactivity	Dog
Format	Antigen affinity purified
Clonality	Polyclonal (goat origin)
Isotype	Goat Ig
Purity	Antigen affinity
Gene ID	5685
Localization	Cytoplasmic, nuclear
Applications	Western Blot : 1-3ug/ml ELISA (peptide) LOD : 1:4000
Limitations	This PSMA4 antibody is available for research use only.



Western blot testing of K562 cell lysate with PSMA4 antibody at 1ug/ml. Predicted molecular weight: 29kDa.



Western blot of NIH3T3 (A), mouse spleen (B), rat spleen (C) lysates with PSMA4 antibody at 0.3ug/ml. Predicted molecular weight: 29kDa.

Description

Additional name(s) for this target protein: Proteasome alpha type 4

Application Notes

Optimal dilution of the PSMA4 antibody should be determined by the researcher.

Immunogen

Amino acids SDANVLTNELR were used as the immunogen for this PSMA4 antibody.

Storage

Aliquot and store the PSMA4 antibody at -20oC.