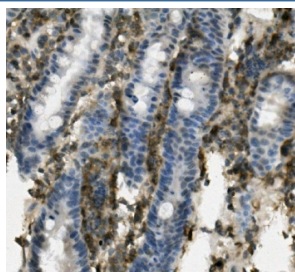


Psgl-1 Antibody / Selplg (RQ6006)

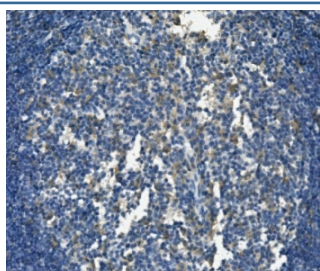
Catalog No.	Formulation	Size
RQ6006	0.5mg/ml if reconstituted with 0.2ml sterile DI water	100 ug

Bulk quote request

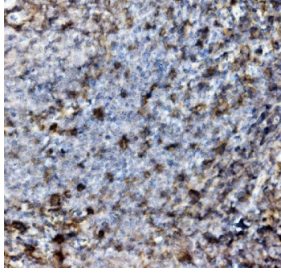
Availability	1-3 business days
Species Reactivity	Mouse, Rat
Format	Antigen affinity purified
Clonality	Polyclonal (rabbit origin)
Isotype	Rabbit IgG
Purity	Affinity purified
Buffer	Lyophilized from 1X PBS with 2% Trehalose and 0.025% sodium azide
UniProt	Q8K5B0
Applications	Western Blot : 0.5-1ug/ml Immunohistochemistry : 1-2ug/ml Flow Cytometry : 1-3ug/million cells Direct ELISA : 0.1-0.5ug/ml
Limitations	This Psgl-1 antibody is available for research use only.



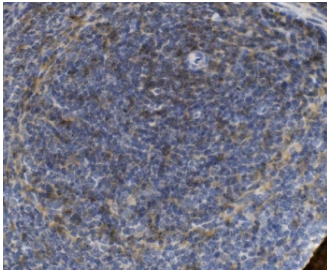
IHC staining of FFPE mouse intestine with Psgl-1 antibody. HIER: boil tissue sections in pH8 EDTA for 20 min and allow to cool before testing.



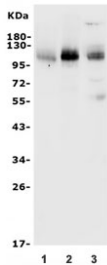
IHC staining of FFPE rat intestine with Psgl-1 antibody. HIER: boil tissue sections in pH8 EDTA for 20 min and allow to cool before testing.



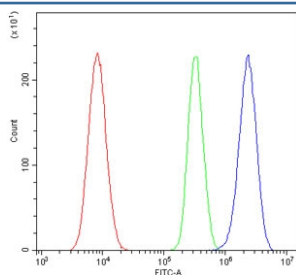
IHC staining of FFPE rat spleen with Psgl-1 antibody. HIER: boil tissue sections in pH8 EDTA for 20 min and allow to cool before testing.



IHC staining of FFPE rat spleen with Psgl-1 antibody. HIER: boil tissue sections in pH8 EDTA for 20 min and allow to cool before testing.



Western blot testing of 1) rat spleen, 2) rat thymus and 3) mouse thymus lysate with Psgl-1 antibody. Expected molecular weight: 42-110 kDa depending on glycosylation level. An ~250 kDa homodimer may also be detected.



Flow cytometry testing of rat NRK cells with Psgl-1 antibody at 1ug/million cells (blocked with goat sera); Red=cells alone, Green=isotype control, Blue= Psgl-1 antibody.

Description

Selectin P ligand, also known as SELPLG or CD162 (cluster of differentiation 162), is a human gene. It is mapped to 12q16. This gene encodes a glycoprotein that functions as a high affinity counter-receptor for the cell adhesion molecules P-, E- and L- selectin expressed on myeloid cells and stimulated T lymphocytes. As such, this protein plays a critical role in leukocyte trafficking during inflammation by tethering of leukocytes to activated platelets or endothelia expressing selectins. This protein requires two post-translational modifications, tyrosine sulfation and the addition of the sialyl Lewis x tetrasaccharide (sLex) to its O-linked glycans, for its high-affinity binding activity. Aberrant expression of this gene and polymorphisms in this gene are associated with defects in the innate and adaptive immune response. Alternate splicing results in multiple transcript variants.

Application Notes

Optimal dilution of the Psgl-1 antibody should be determined by the researcher.

Immunogen

Recombinant rat protein (amino acids L18-P420) was used as the immunogen for the Psgl-1 antibody.

Storage

After reconstitution, the Psgl-1 antibody can be stored for up to one month at 4oC. For long-term, aliquot and store at -20oC. Avoid repeated freezing and thawing.