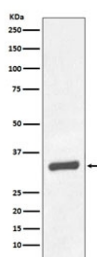


## PSA Antibody / Prostate Specific Antigen [clone GDC-11] (RQ5174)

Catalog No.	Formulation	Size
RQ5174	Antibody in PBS with 0.02% sodium azide, 50% glycerol and 0.4-0.5mg/ml BSA	100 ul

[Bulk quote request](#)

Availability	1-2 weeks
Species Reactivity	Human
Format	Purified
Clonality	Rabbit Monoclonal
Isotype	Rabbit IgG
Clone Name	GDC-11
Purity	Affinity purified
UniProt	P07288
Applications	Western Blot : 1:5000-1:20000
Limitations	This PSA antibody is available for research use only.



Western blot testing of human prostate carcinoma tissue lysate with PSA antibody.  
Predicted molecular weight: 30-34 kDa.

### Description

The KLK3 gene is one of the fifteen kallikrein subfamily members located in a cluster on chromosome 19. Its protein product is a protease present in seminal plasma. It is thought to function normally in the liquefaction of seminal coagulum, presumably by hydrolysis of the high molecular mass seminal vesicle protein. Serum level of this protein, called PSA in the clinical setting, is useful in the diagnosis and monitoring of prostatic carcinoma. [RefSeq]

### Application Notes

Optimal dilution of the PSA antibody should be determined by the researcher.

## **Immunogen**

A synthetic peptide specific to human PSA / Prostate Specific Antigen was used as the immunogen for the PSA antibody.

## **Storage**

Store the PSA antibody at -20oC.