

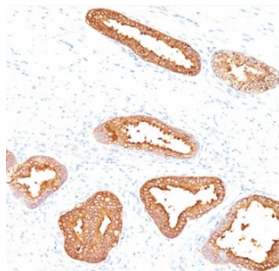
## PSA Antibody / Prostate Specific Antigen [clone A67-B/E3] (V2003)

Catalog No.	Formulation	Size
V2003-100UG	0.2 mg/ml in 1X PBS with 0.1 mg/ml BSA (US sourced) and 0.05% sodium azide	100 ug
V2003-20UG	0.2 mg/ml in 1X PBS with 0.1 mg/ml BSA (US sourced) and 0.05% sodium azide	20 ug
V2003SAF-100UG	1 mg/ml in 1X PBS; BSA free, sodium azide free	100 ug
V2003IHC-7ML	Prediluted in 1X PBS with 0.1 mg/ml BSA (US sourced) and 0.05% sodium azide; *For IHC use only*	7 ml

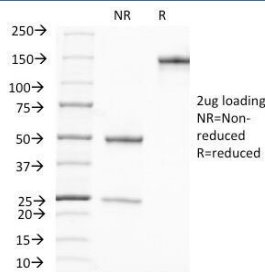
 Citations (31)

[Bulk quote request](#)

<b>Species Reactivity</b>	Human
<b>Format</b>	Purified
<b>Clonality</b>	Monoclonal (mouse origin)
<b>Isotype</b>	Mouse IgG1, kappa
<b>Clone Name</b>	A67-B/E3
<b>Purity</b>	Protein G affinity chromatography
<b>Buffer</b>	1X PBS, pH 7.4
<b>Gene ID</b>	354
<b>Localization</b>	Cytoplasmic
<b>Applications</b>	Immunohistochemistry (FFPE) : 1-2ug/ml for 30 min at RT
<b>Limitations</b>	This <b>PSA antibody</b> is available for research use only.



IHC testing of human prostate carcinoma stained with PSA antibody.



SDS-PAGE Analysis of Purified, BSA-Free PSA Antibody (A67-B/E3). Confirmation of Integrity and Purity of the Antibody.

## Description

This antibody recognizes a single protein of 33-34kDa, identified as the Prostate specific antigen. This PSA antibody is highly specific and stains prostatic secretory and ductal epithelium in both normal and neoplastic tissues. Prostate specific antigen is a chymotrypsin-like serine protease (kallikrein family) exclusively produced by the prostate epithelium, and abundant in seminal fluid. PSA can be detected in the sera of patients with prostatic carcinoma. It is predominantly complexed to a liver-derived serine protease inhibitor, alpha-1-antichymotrypsin (ACT). A higher proportion of serum PSA is complexed to ACT in prostate cancer than in benign hyperplasia.

## Application Notes

The concentration stated for each application is a general starting point. Variations in protocols, secondaries and substrates may require the PSA antibody to be titered up or down for optimal performance.

1. Staining of formalin-fixed tissues requires boiling tissue sections in 1mM EDTA Buffer, pH 7.5-8.5, for 10-20 min followed by cooling at RT for 20 minutes.
2. The prediluted format is supplied in a dropper bottle and is optimized for use in IHC. After epitope retrieval step (if required), drip mAb solution onto the tissue section and incubate at RT for 30 min.

## Immunogen

Prostate Specific Antigen from human sperm plasma was used as the antigen for this PSA antibody.

## Storage

Store the PSA antibody at 2-8oC (with azide) or aliquot and store at -20oC or colder (without azide).

## References (1)