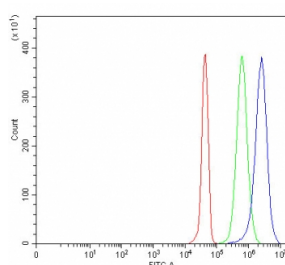


## PRSS27 Antibody / Serine protease 27 / Marapsin (RQ7981)

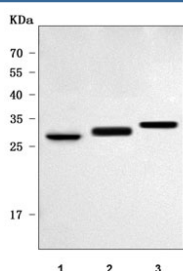
Catalog No.	Formulation	Size
RQ7981	0.5mg/ml if reconstituted with 0.2ml sterile DI water	100 ug

**Bulk quote request**

<b>Availability</b>	1-3 business days
<b>Species Reactivity</b>	Human, Mouse, Rat
<b>Format</b>	Antigen affinity purified
<b>Clonality</b>	Polyclonal (rabbit origin)
<b>Isotype</b>	Rabbit IgG
<b>Purity</b>	Antigen affinity purified
<b>Buffer</b>	Lyophilized from 1X PBS with 2% Trehalose
<b>UniProt</b>	Q9BQR3
<b>Applications</b>	Western Blot : 0.5-1ug/ml Flow Cytometry : 1-3ug/million cells Direct ELISA : 0.1-0.5ug/ml
<b>Limitations</b>	This PRSS27 antibody is available for research use only.



Flow cytometry testing of human JK cells with PRSS27 antibody at 1ug/million cells (blocked with goat sera); Red=cells alone, Green=isotype control, Blue= PRSS27 antibody.



Western blot testing of 1) rat stomach, 2) mouse pancreas and 3) mouse MFC cell lysate with PRSS27 antibody. Predicted molecular weight ~32 kDa.

## Description

This gene is located within a large protease gene cluster on chromosome 16. It belongs to the group-1 subfamily of serine proteases. The encoded protein is a secreted tryptic serine protease and is expressed mainly in the pancreas. Alternative splicing results in multiple transcript variants.

## Application Notes

Optimal dilution of the PRSS27 antibody should be determined by the researcher.

## Immunogen

E. coli-derived recombinant human protein (amino acids A23-K290) was used as the immunogen for the PRSS27 antibody.

## Storage

After reconstitution, the PRSS27 antibody can be stored for up to one month at 4°C. For long-term, aliquot and store at -20°C. Avoid repeated freezing and thawing.