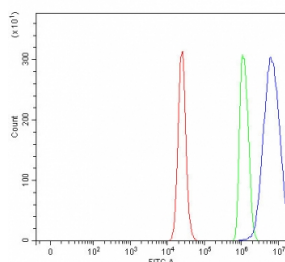


PRSS22 Antibody / Brain-specific serine protease 4 (RQ8097)

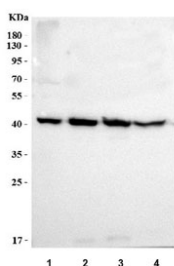
Catalog No.	Formulation	Size
RQ8097	0.5mg/ml if reconstituted with 0.2ml sterile DI water	100 ug

Bulk quote request

Availability	1-3 business days
Species Reactivity	Human
Format	Antigen affinity purified
Clonality	Polyclonal (rabbit origin)
Isotype	Rabbit IgG
Purity	Antigen affinity purified
Buffer	Lyophilized from 1X PBS with 2% Trehalose
UniProt	Q9GZN4
Applications	Western Blot : 0.5-1ug/ml Flow Cytometry : 1-3ug/million cells Direct ELISA : 0.1-0.5ug/ml
Limitations	This PRSS22 antibody is available for research use only.



Flow cytometry testing of fixed and permeabilized human RT4 cells with PRSS22 antibody at 1ug/million cells (blocked with goat sera); Red=cells alone, Green=isotype control, Blue= PRSS22 antibody.



Western blot testing of human 1) Caco-2, 2) MCF7, 3) RT4 and 4) HaCaT cell lysate with PRSS22 antibody. Predicted molecular weight ~33 kDa but may be observed at higher molecular weights due to glycosylation.

Description

Brain-specific serine protease 4 (BSSP-4), also known as serine protease 22 or tryptase epsilon, is an enzyme that in humans is encoded by the PRSS22 gene. This gene encodes a member of the trypsin family of serine proteases. The enzyme is expressed in the airways in a developmentally regulated manner. The gene is part of a cluster of serine protease genes on chromosome 16.

Application Notes

Optimal dilution of the PRSS22 antibody should be determined by the researcher.

Immunogen

E. coli-derived recombinant human protein (amino acids K43-Q299) was used as the immunogen for the PRSS22 antibody.

Storage

After reconstitution, the PRSS22 antibody can be stored for up to one month at 4oC. For long-term, aliquot and store at -20oC. Avoid repeated freezing and thawing.