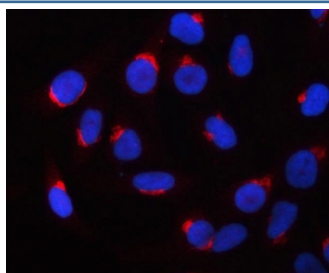


PRRC1 Antibody / Proline-rich and coiled-coil-containing protein 1 (RQ8248)

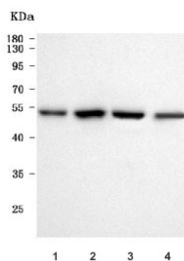
Catalog No.	Formulation	Size
RQ8248	0.5mg/ml if reconstituted with 0.2ml sterile DI water	100 ug

[Bulk quote request](#)

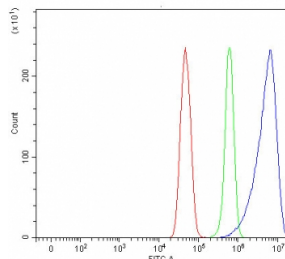
Availability	1-3 business days
Species Reactivity	Human
Format	Antigen affinity purified
Clonality	Polyclonal (rabbit origin)
Isotype	Rabbit IgG
Purity	Antigen affinity purified
Buffer	Lyophilized from 1X PBS with 2% Trehalose
UniProt	Q96M27
Localization	Cytoplasm
Applications	Western Blot : 0.5-1ug/ml Immunofluorescence : 5ug/ml Flow Cytometry : 1-3ug/million cells Direct ELISA : 0.1-0.5ug/ml
Limitations	This PRRC1 antibody is available for research use only.



Immunofluorescent staining of FFPE human HeLa cells with PRRC1 antibody (red) and DAPI nuclear stain (blue). HIER: steam section in pH6 citrate buffer for 20 min.



Western blot testing of human 1) HeLa, 2) MCF7, 3) HepG2 and 4) Caco-2 cell lysate with PRRC1 antibody. Predicted molecular weight ~47 kDa.



Flow cytometry testing of fixed and permeabilized human U-251 cells with PRRC1 antibody at 1ug/million cells (blocked with goat sera); Red=cells alone, Green=isotype control, Blue= PRRC1 antibody.

Description

PRRC1 (Proline-Rich Coiled-Coil 1) is a Protein Coding gene. The PRRC1 gene, located on 5q23.2, is conserved in chimpanzee, Rhesus monkey, dog, cow, mouse, rat, chicken, zebrafish, and frog. The PRCC1 gene has two distinct regions: a proline-rich region on the N-terminus, and the DUF84 region on the C-terminus. PRCC1 is the commonly identified protein name of CAD38605. It encodes for 445 amino acids for a predicted total of 6 exons. The predicted molecular weight is 46.7 kDa, and the isoelectric point is 5.46. Orthologs have been determined in most eukaryotes, the most highly conserved being found in most mammalian species. PRRC1 is widely expressed in the thyroid, endometrium, and other tissues. Diseases associated with PRRC1 include Dystonia 23.

Application Notes

Optimal dilution of the PRRC1 antibody should be determined by the researcher.

Immunogen

E. coli-derived recombinant human protein (amino acids Y139-D411) was used as the immunogen for the PRRC1 antibody.

Storage

After reconstitution, the PRRC1 antibody can be stored for up to one month at 4oC. For long-term, aliquot and store at -20oC. Avoid repeated freezing and thawing.