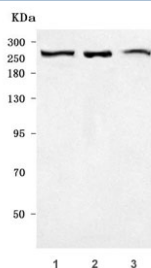


## PRPF8 Antibody / Pre-mRNA-processing-splicing factor 8 (RQ8095)

Catalog No.	Formulation	Size
RQ8095	0.5mg/ml if reconstituted with 0.2ml sterile DI water	100 ug

**Bulk quote request**

<b>Availability</b>	1-3 business days
<b>Species Reactivity</b>	Human, Mouse
<b>Format</b>	Antigen affinity purified
<b>Clonality</b>	Polyclonal (rabbit origin)
<b>Isotype</b>	Rabbit IgG
<b>Purity</b>	Antigen affinity purified
<b>Buffer</b>	Lyophilized from 1X PBS with 2% Trehalose
<b>UniProt</b>	Q6P2Q9
<b>Applications</b>	Western Blot : 0.5-1ug/ml Direct ELISA : 0.1-0.5ug/ml
<b>Limitations</b>	This PRPF8 antibody is available for research use only.



Western blot testing of 1) human HeLa, 2) human SH-SY5Y and 3) mouse NIH 3T3 cell lysate with PRPF8 antibody. Predicted molecular weight ~274 kDa.

### Description

Pre-mRNA-processing-splicing factor 8 is a protein that in humans is encoded by the PRPF8 gene. Pre-mRNA splicing occurs in 2 sequential transesterification steps. The protein encoded by this gene is a component of both U2- and U12-dependent spliceosomes, and found to be essential for the catalytic step II in pre-mRNA splicing process. It contains several WD repeats, which function in protein-protein interactions. This protein has a sequence similarity to yeast Prp8 protein. This gene is a candidate gene for autosomal dominant retinitis pigmentosa.

### Application Notes

Optimal dilution of the PRPF8 antibody should be determined by the researcher.

## **Immunogen**

E. coli-derived recombinant human protein (amino acids E433-H2166) was used as the immunogen for the PRPF8 antibody.

## **Storage**

After reconstitution, the PRPF8 antibody can be stored for up to one month at 4°C. For long-term, aliquot and store at -20°C. Avoid repeated freezing and thawing.