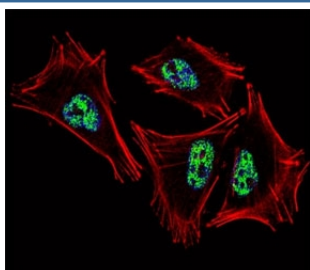


## PROX1 Antibody / Prospero homeobox 1 (F47894)

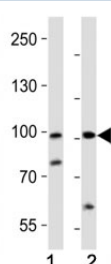
Catalog No.	Formulation	Size
F47894-0.4ML	In 1X PBS, pH 7.4, with 0.09% sodium azide	0.4 ml
F47894-0.08ML	In 1X PBS, pH 7.4, with 0.09% sodium azide	0.08 ml

[Bulk quote request](#)

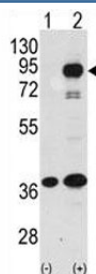
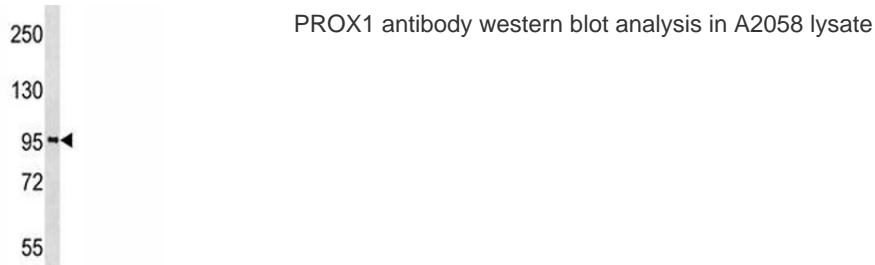
<b>Availability</b>	1-3 business days
<b>Species Reactivity</b>	Human, Rat
<b>Predicted Reactivity</b>	Mouse
<b>Format</b>	Purified
<b>Clonality</b>	Polyclonal (rabbit origin)
<b>Isotype</b>	Rabbit Ig
<b>Purity</b>	Purified
<b>UniProt</b>	Q92786
<b>Applications</b>	Western Blot : 1:500 Immunofluorescence : 1:10-1:50
<b>Limitations</b>	This PROX1 antibody is available for research use only.



Fluorescent confocal image of A2058 cell stained with PROX1 antibody at 1:25. PROX1 immunoreactivity is localized to the nucleus.



Western blot analysis of lysate from (1) human A2058 and (2) rat PC-12 cell line using PROX1 antibody at 1:1000. Predicted molecular weight is 83 kDa, observed at 80-110 kDa.



Western blot analysis of PROX1 antibody and 293 cell lysate (2 ug/lane) either nontransfected (Lane 1) or transiently transfected with the human gene (2).

## Description

The expression pattern of Prox1 suggests that it has a role in a variety of embryonic tissues, including lens. Prox mRNA is present in many different human tissues with lens demonstrating the highest level. Homozygous Prox1-null mice die at midgestation from multiple developmental defects, and a targeted effect on lens development has been reported. Prox1 inactivation caused abnormal cellular proliferation, downregulated expression of the cell cycle inhibitors Cdkn1b and Cdkn1c, misexpression of E-cadherin, and excessive apoptosis. Consequently, mutant lens cells failed to polarize and elongate properly, resulting in a hollow lens.

## Application Notes

Titration of the PROX1 antibody may be required due to differences in protocols and secondary/substrate sensitivity.

## Immunogen

A portion of amino acids 492-522 from the human protein was used as the immunogen for this PROX1 antibody.

## Storage

Aliquot the PROX1 antibody and store frozen at -20oC or colder. Avoid repeated freeze-thaw cycles.