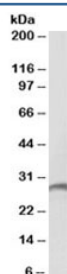


Proteinase 3 Antibody / PRTN3 (R34244)

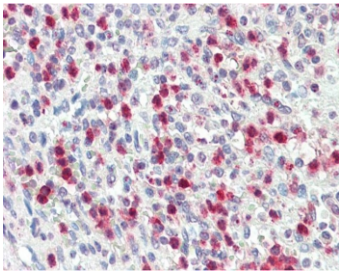
Catalog No.	Formulation	Size
R34244-100UG	0.5 mg/ml in 1X TBS, pH7.3, with 0.5% BSA (US sourced) and 0.02% sodium azide	100 ug

[Bulk quote request](#)

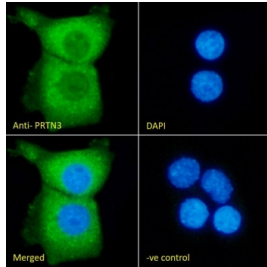
Availability	1-3 business days
Species Reactivity	Human
Format	Antigen affinity purified
Clonality	Polyclonal (goat origin)
Isotype	Goat Ig
Purity	Antigen affinity
Gene ID	5657
Localization	Cell membrane, secreted, cytoplasm
Applications	Western Blot : 1-3ug/ml Immunohistochemistry (FFPE) : 5ug/ml Immunofluorescence : 10ug/ml Flow Cytometry : 10ug/ml ELISA (peptide) LOD : 1:1000
Limitations	This Proteinase 3 antibody is available for research use only.



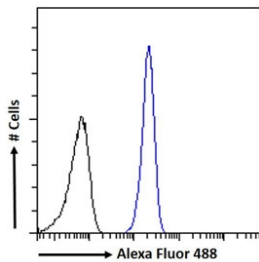
Western blot testing of human spleen lysate with Proteinase 3 antibody at 2ug/ml.
Predicted molecular weight ~28 kDa.



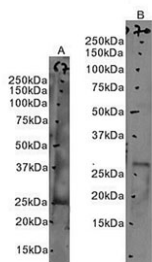
IHC testing of FFPE human spleen tissue with Proteinase 3 antibody at 5ug/ml. Required HIER: steamed antigen retrieval with pH6 citrate buffer; AP-staining.



Immunofluorescent staining of fixed and permeabilized human A431 cells with Proteinase 3 antibody (green) at 10ug/ml and DAPI nuclear stain (blue).



FACS testing of fixed and permeabilized human A431 cells with Proteinase 3 antibody (blue) at 10ug/ml and naive goat Ig (black).



Western blot testing of human A) bone marrow and B) spleen tissue lysate with Proteinase 3 antibody. Predicted molecular weight ~28 kDa.

Description

Additional name(s) for this target protein: Myeloblastin, ACPA, AGP7; PRTN3

Application Notes

Optimal dilution of the Proteinase 3 antibody should be determined by the researcher.

Immunogen

Amino acids HNVRTQEPTQQ were used as the immunogen for this Proteinase 3 antibody.

Storage

Aliquot and store the Proteinase 3 antibody at -20oC.

