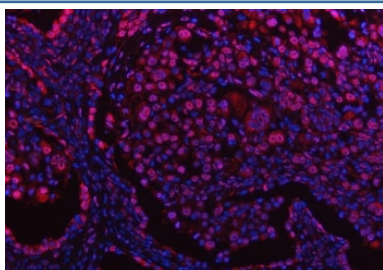


## Protein phosphatase 1G Antibody / PPM1G (RQ8033)

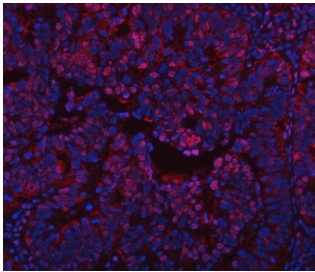
Catalog No.	Formulation	Size
RQ8033	0.5mg/ml if reconstituted with 0.2ml sterile DI water	100 ug

**Bulk quote request**

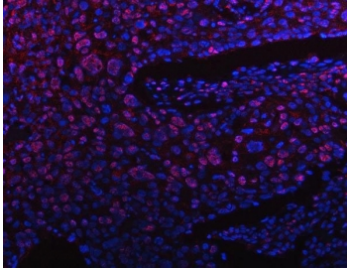
<b>Availability</b>	1-3 business days
<b>Species Reactivity</b>	Human, Mouse, Rat
<b>Format</b>	Antigen affinity purified
<b>Clonality</b>	Polyclonal (rabbit origin)
<b>Isotype</b>	Rabbit IgG
<b>Purity</b>	Antigen affinity purified
<b>Buffer</b>	Lyophilized from 1X PBS with 2% Trehalose
<b>UniProt</b>	O15355
<b>Localization</b>	Nuclear, cytoplasmic
<b>Applications</b>	Western Blot : 0.5-1ug/ml Immunohistochemistry (FFPE) : 2-5ug/ml Immunofluorescence : 5ug/ml Flow Cytometry : 1-3ug/million cells Direct ELISA : 0.1-0.5ug/ml Immunoprecipitation : 5ug/ml
<b>Limitations</b>	This Protein phosphatase 1G antibody is available for research use only.



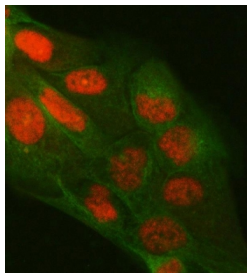
Immunofluorescent staining of FFPE human lung cancer tissue with Protein phosphatase 1G antibody (red) and DAPI nuclear stain (blue). HIER: steam section in pH8 EDTA buffer for 20 min.



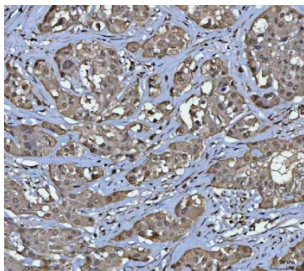
Immunofluorescent staining of FFPE human intestinal cancer tissue with Protein phosphatase 1G antibody (red) and DAPI nuclear stain (blue). HIER: steam section in pH8 EDTA buffer for 20 min.



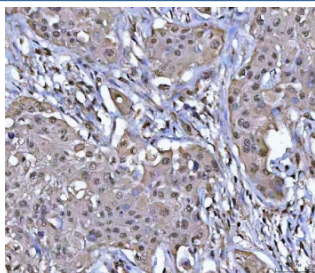
Immunofluorescent staining of FFPE human esophagus squama cancer tissue with Protein phosphatase 1G antibody (red) and DAPI nuclear stain (blue). HIER: steam section in pH8 EDTA buffer for 20 min.



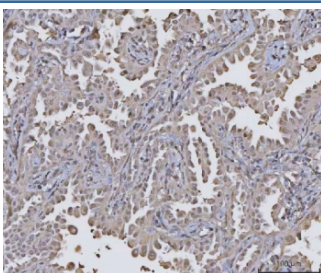
Immunofluorescent staining of FFPE human A431 cells with Protein phosphatase 1G antibody (red) and Alpha Tubulin mAb (green). HIER: steam section in pH6 citrate buffer for 20 min.



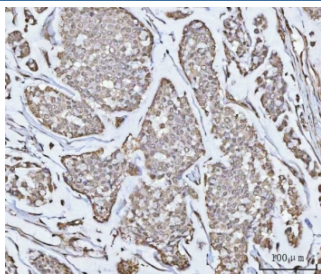
IHC staining of FFPE human lymphoma tissue with Protein phosphatase 1G antibody. HIER: boil tissue sections in pH8 EDTA for 20 min and allow to cool before testing.



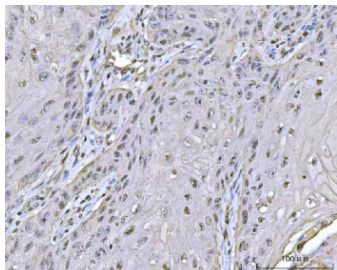
IHC staining of FFPE human lymphoma tissue with Protein phosphatase 1G antibody. HIER: boil tissue sections in pH8 EDTA for 20 min and allow to cool before testing.



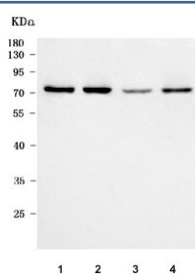
IHC staining of FFPE human lung cancer tissue with Protein phosphatase 1G antibody. HIER: boil tissue sections in pH8 EDTA for 20 min and allow to cool before testing.



IHC staining of FFPE human breast cancer tissue with Protein phosphatase 1G antibody. HIER: boil tissue sections in pH8 EDTA for 20 min and allow to cool before testing.



IHC staining of FFPE human skin squamous carcinoma tissue with Protein phosphatase 1G antibody. HIER: boil tissue sections in pH8 EDTA for 20 min and allow to cool before testing.



Western blot testing of human 1) HeLa, 2) 293T, 3) A431 and 4) Jurkat cell lysate with Protein phosphatase 1G antibody. Predicted molecular weight ~59 kDa, commonly observed at 59-75 kDa.