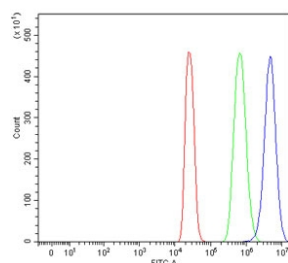


## Protein phosphatase 1 regulatory subunit 15B Antibody / PPP1R15B (RQ8244)

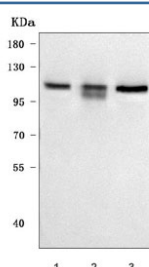
Catalog No.	Formulation	Size
RQ8244	0.5mg/ml if reconstituted with 0.2ml sterile DI water	100 ug

**Bulk quote request**

<b>Availability</b>	1-3 business days
<b>Species Reactivity</b>	Human
<b>Format</b>	Antigen affinity purified
<b>Clonality</b>	Polyclonal (rabbit origin)
<b>Isotype</b>	Rabbit IgG
<b>Purity</b>	Antigen affinity purified
<b>Buffer</b>	Lyophilized from 1X PBS with 2% Trehalose
<b>UniProt</b>	Q5SWA1
<b>Applications</b>	Western Blot : 0.5-1ug/ml Flow Cytometry : 1-3ug/million cells Direct ELISA : 0.1-0.5ug/ml
<b>Limitations</b>	This Protein phosphatase 1 regulatory subunit 15B antibody is available for research use only.



Flow cytometry testing of fixed and permeabilized human 293T cells with Protein phosphatase 1 regulatory subunit 15B antibody at 1ug/million cells (blocked with goat sera); Red=cells alone, Green=isotype control, Blue= Protein phosphatase 1 regulatory subunit 15B antibody.



Western blot testing of human 1) 293T, 2) MCF7 and 3) HeLa cell lysate with Protein phosphatase 1 regulatory subunit 15B antibody. Predicted molecular weight ~79 kDa but may be observed at up to ~100 kDa, possibly due to phosphorylation.

## Description

PPP1R15B (Protein phosphatase 1, regulatory subunit 15b), also called CREP, promotes dephosphorylation of the transcription initiation factor EIF2-alpha through recruitment of protein phosphatase-1 (PP1) catalytic subunits. The PPP1R15B gene is mapped to chromosome 1q32.1 based on an alignment of the PPP1R15B sequence by Hartz(2010). Harding et al.(2009) obtained Ppp1r15b <sup>-/-</sup> mice at a mendelian ratio. However, Ppp1r15b <sup>-/-</sup> newborns were half the size of their wildtype littermates, were notably pale, and failed to nurse, and none survived the first day of postnatal life. Ppp1r15b <sup>-/-</sup> embryos that were also homozygous for an Eif2-alpha mutation that prevented Eif2-alpha phosphorylation were normalized, including elevated birth size and restored red blood cell count, compared with Ppp1r15b <sup>-/-</sup> embryos with wildtype Eif2-alpha.

## Application Notes

Optimal dilution of the Protein phosphatase 1 regulatory subunit 15B antibody should be determined by the researcher.

## Immunogen

E. coli-derived recombinant human protein (amino acids Q211-D657) was used as the immunogen for the Protein phosphatase 1 regulatory subunit 15B antibody.

## Storage

After reconstitution, the Protein phosphatase 1 regulatory subunit 15B antibody can be stored for up to one month at 4oC. For long-term, aliquot and store at -20oC. Avoid repeated freezing and thawing.