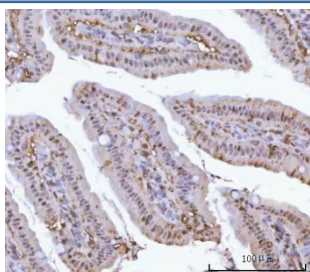


Proteasome 20S alpha 1 Antibody / PSMA1 (RQ8147)

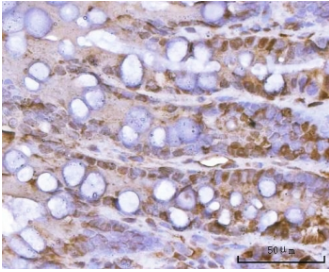
Catalog No.	Formulation	Size
RQ8147	0.5mg/ml if reconstituted with 0.2ml sterile DI water	100 ug

Bulk quote request

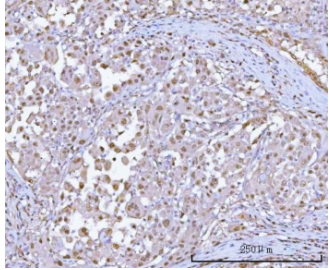
Availability	1-3 business days
Species Reactivity	Human, Mouse, Rat
Format	Antigen affinity purified
Clonality	Polyclonal (rabbit origin)
Isotype	Rabbit IgG
Purity	Antigen affinity purified
Buffer	Lyophilized from 1X PBS with 2% Trehalose
UniProt	P25786
Localization	Cytoplasmic, nuclear
Applications	Western Blot : 0.5-1ug/ml Immunohistochemistry (FFPE) : 2-5ug/ml Flow Cytometry : 1-3ug/million cells Direct ELISA : 0.1-0.5ug/ml
Limitations	This Proteasome 20S alpha 1 antibody is available for research use only.



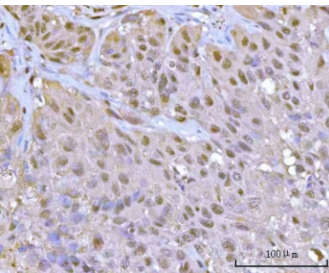
IHC staining of FFPE mouse colon tissue with Proteasome 20S alpha 1 antibody. HIER: boil tissue sections in pH8 EDTA for 20 min and allow to cool before testing.



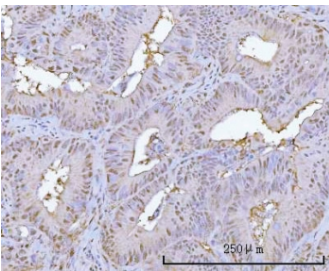
IHC staining of FFPE rat colon tissue with Proteasome 20S alpha 1 antibody. HIER: boil tissue sections in pH8 EDTA for 20 min and allow to cool before testing.



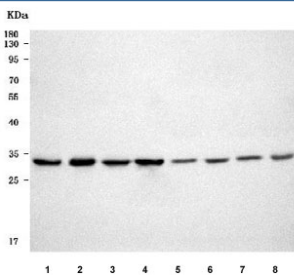
IHC staining of FFPE human lung adenocarcinoma tissue with Proteasome 20S alpha 1 antibody. HIER: boil tissue sections in pH8 EDTA for 20 min and allow to cool before testing.



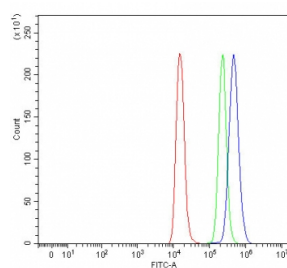
IHC staining of FFPE human urothelial carcinoma tissue with Proteasome 20S alpha 1 antibody. HIER: boil tissue sections in pH8 EDTA for 20 min and allow to cool before testing.



IHC staining of FFPE human rectum adenocarcinoma tissue with Proteasome 20S alpha 1 antibody. HIER: boil tissue sections in pH8 EDTA for 20 min and allow to cool before testing.



Western blot testing of 1) human MCF7, 2) human PC-3, 3) human HepG2, 4) human Jurkat, 5) rat brain, 6) rat liver, 7) mouse brain and 8) mouse liver tissue lysate with Proteasome 20S alpha 1 antibody. Predicted molecular weight ~30 kDa.



Flow cytometry testing of fixed and permeabilized human Raji cells with Proteasome 20S alpha 1 antibody at 1ug/million cells (blocked with goat sera); Red=cells alone, Green=isotype control, Blue= Proteasome 20S alpha 1 antibody.

Proteasome subunit alpha type-1 is a protein that in humans is encoded by the PSMA1 gene. The proteasome is a multicatalytic proteinase complex with a highly ordered ring-shaped 20S core structure. The core structure is composed of 4 rings of 28 non-identical subunits; 2 rings are composed of 7 alpha subunits and 2 rings are composed of 7 beta subunits. Proteasomes are distributed throughout eukaryotic cells at a high concentration and cleave peptides in an ATP/ubiquitin-dependent process in a non-lysosomal pathway. An essential function of a modified proteasome, the immunoproteasome, is the processing of class I MHC peptides. This gene encodes a member of the peptidase T1A family, that is a 20S core alpha subunit. Alternative splicing results in multiple transcript variants encoding distinct isoforms.

Application Notes

Optimal dilution of the Proteasome 20S alpha 1 antibody should be determined by the researcher.

Immunogen

E. coli-derived recombinant human protein (amino acids M1-E252) was used as the immunogen for the Proteasome 20S alpha 1 antibody.

Storage

After reconstitution, the Proteasome 20S alpha 1 antibody can be stored for up to one month at 4oC. For long-term, aliquot and store at -20oC. Avoid repeated freezing and thawing.