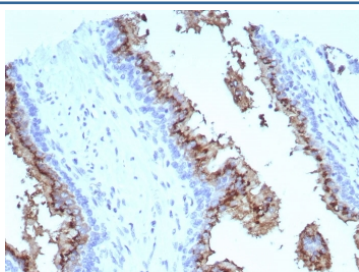


## Prostein Antibody / SLC45A3 [clone SLC45A3/7647] (V4783)

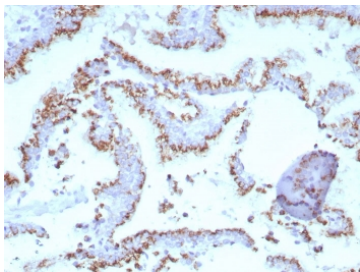
Catalog No.	Formulation	Size
V4783-100UG	0.2 mg/ml in 1X PBS with 0.1 mg/ml BSA (US sourced), 0.05% sodium azide	100 ug
V4783-20UG	0.2 mg/ml in 1X PBS with 0.1 mg/ml BSA (US sourced), 0.05% sodium azide	20 ug
V4783SAF-100UG	1 mg/ml in 1X PBS; BSA free, sodium azide free	100 ug

[Bulk quote request](#)

<b>Availability</b>	1-3 business days
<b>Species Reactivity</b>	Human
<b>Format</b>	Purified
<b>Clonality</b>	Monoclonal (mouse origin)
<b>Isotype</b>	Mouse IgG1, kappa
<b>Clone Name</b>	SLC45A3/7647
<b>Purity</b>	Protein A/G affinity
<b>UniProt</b>	Q96JT2
<b>Localization</b>	Membrane
<b>Applications</b>	Immunohistochemistry (FFPE) : 1-2ug/ml for 30 min at RT
<b>Limitations</b>	This Prostein antibody is available for research use only.



IHC staining of FFPE human prostate tissue with Prostein antibody (clone SLC45A3/7647). HIER: boil tissue sections in pH 9 10mM Tris with 1mM EDTA for 20 min and allow to cool before testing.



IHC staining of FFPE human prostate tissue with Prostein antibody (clone SLC45A3/7647). HIER: boil tissue sections in pH 9 10mM Tris with 1mM EDTA for 20 min and allow to cool before testing.

## Description

Human prostein is a 553 aa protein identified by cDNA library subtraction and subsequent high-throughput microarray screening of prostate cancer. Prostein has multiple transmembrane domains. Prostein has been shown to be uniquely expressed in normal and cancerous prostatic tissues. By immunohistochemistry, prostein is expressed in the vast majority of normal and malignant prostatic tissues, regardless of grade and metastatic status. No protein expression is detected in normal and malignant tissue samples representing the great majority of essential tissues and tumors. In particular, prostein is expressed in most of poorly differentiated prostatic carcinoma, including small cell prostate carcinoma. Prostein is more specific and sensitive for prostatic carcinomas than PSA and PSAP.

## Application Notes

Optimal dilution of the Prostein antibody should be determined by the researcher.

## Immunogen

Recombinant human SLC45A3 protein was used as the immunogen for the Prostein antibody.

## Storage

Aliquot the Prostein antibody and store frozen at -20°C or colder. Avoid repeated freeze-thaw cycles.