

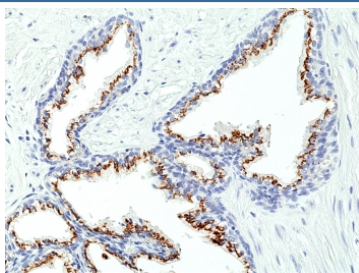
Prostein Antibody / SLC45A3 [clone RM426] (R20440)

Catalog No.	Formulation	Size
R20440-0.1ML	Antibody in PBS with 50% glycerol, 1% BSA and 0.09% sodium azide	100 ul

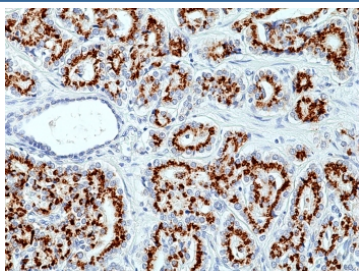
Recombinant **RABBIT MONOCLONAL**

Bulk quote request

Availability	1-3 business days
Species Reactivity	Human
Format	Purified
Clonality	Recombinant Rabbit Monoclonal
Isotype	Rabbit IgG
Clone Name	RM426
Purity	Protein A purified from animal origin-free supernatant
UniProt	Q96JT2
Localization	Membrane, Vesicles, Nucleus
Applications	Immunohistochemistry (FFPE) : 1:50 -1:100
Limitations	This recombinant Prostein antibody is available for research use only.



IHC staining of FFPE human prostate tissue with recombinant Prostein antibody at 1:100.



IHC staining of FFPE human prostate cancer tissue with recombinant Prostein antibody at 1:100.

Description

This recombinant antibody reacts to human Prostein/SLC45A3.

Application Notes

The stated application concentrations are suggested starting points. Titration of the recombinant Prostein antibody may be required due to differences in protocols and secondary/substrate sensitivity.

Immunogen

A peptide corresponding to the C-terminus of human Prostein was used as the immunogen for the recombinant Prostein antibody.

Storage

Store the recombinant Prostein antibody at -20oC.