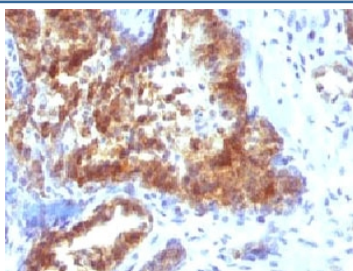


## Prostate Specific Antibody / PSA [clone KLK3/1248] (V2628)

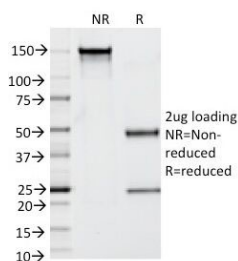
Catalog No.	Formulation	Size
V2628-100UG	0.2 mg/ml in 1X PBS with 0.1 mg/ml BSA (US sourced) and 0.05% sodium azide	100 ug
V2628-20UG	0.2 mg/ml in 1X PBS with 0.1 mg/ml BSA (US sourced) and 0.05% sodium azide	20 ug
V2628SAF-100UG	1 mg/ml in 1X PBS; BSA free, sodium azide free	100 ug
V2628IHC-7ML	Prediluted in 1X PBS with 0.1 mg/ml BSA (US sourced) and 0.05% sodium azide; *For IHC use only*	7 ml

**Bulk quote request**

<b>Availability</b>	1-3 business days
<b>Species Reactivity</b>	Human
<b>Format</b>	Purified
<b>Clonality</b>	Monoclonal (mouse origin)
<b>Isotype</b>	Mouse IgG1, kappa
<b>Clone Name</b>	KLK3/1248
<b>Purity</b>	Protein G affinity chromatography
<b>UniProt</b>	P07288
<b>Localization</b>	Cytoplasmic
<b>Applications</b>	Immunohistochemistry (FFPE) : 1-2ug/ml for 30 min at RT
<b>Limitations</b>	This Prostate Specific antibody is available for research use only.



IHC: Formalin-fixed, paraffin-embedded human prostate carcinoma stained with Prostate Specific antibody (clone KLK3/1248).



SDS-PAGE Analysis of Purified, BSA-Free Prostate Specific Antibody (KLK3/1248).  
Confirmation of Integrity and Purity of the Antibody.

## Description

Recognizes a single protein of 33-34kDa, identified as the prostate specific antigen (PSA). This mAb is highly specific to PSA and stains prostatic secretory and ductal epithelium in both normal and neoplastic tissues. PSA is a chymotrypsin-like serine protease (kallikrein family) exclusively produced by the prostate epithelium, and abundant in seminal fluid. PSA can be detected in the sera of patients with prostatic carcinoma. It is predominantly complexed to a liver-derived serine protease inhibitor, alpha-1-antichymotrypsin (ACT). A higher proportion of serum PSA is complexed to ACT in prostate cancer than in benign prostate hyperplasia. This mAb makes an excellent pair with mAb A67-B/E3 for PSA tests.

## Application Notes

Optimal dilution of the Prostate Specific antibody should be determined by the researcher.

1. Staining of formalin-fixed tissues requires boiling tissue sections in pH 9 10mM Tris with 1mM EDTA for 10-20 min followed by cooling at RT for 20 minutes
2. The prediluted format is supplied in a dropper bottle and is optimized for use in IHC. After epitope retrieval step (if required), drip mAb solution onto the tissue section and incubate at RT for 30 min.

## Immunogen

Recombinant full-length human PSA protein was used as the immunogen for the Prostate Specific antibody.

## Storage

Store the Prostate Specific antibody at 2-8oC (with azide) or aliquot and store at -20oC or colder (without azide).