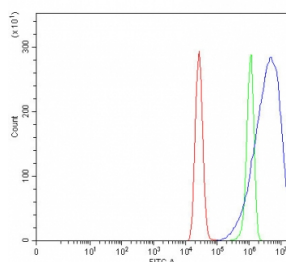


## Prostasin Antibody / PRSS8 (RQ8101)

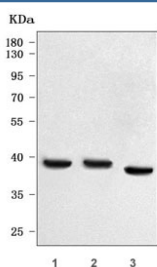
Catalog No.	Formulation	Size
RQ8101	0.5mg/ml if reconstituted with 0.2ml sterile DI water	100 ug

**Bulk quote request**

<b>Availability</b>	1-3 business days
<b>Species Reactivity</b>	Human
<b>Format</b>	Antigen affinity purified
<b>Clonality</b>	Polyclonal (rabbit origin)
<b>Isotype</b>	Rabbit IgG
<b>Purity</b>	Antigen affinity purified
<b>Buffer</b>	Lyophilized from 1X PBS with 2% Trehalose
<b>UniProt</b>	Q16651
<b>Applications</b>	Western Blot : 0.5-1ug/ml Flow Cytometry : 1-3ug/million cells Direct ELISA : 0.1-0.5ug/ml
<b>Limitations</b>	This Prostasin antibody is available for research use only.



Flow cytometry testing of fixed and permeabilized human MCF7 cells with Prostasin antibody at 1ug/million cells (blocked with goat sera); Red=cells alone, Green=isotype control, Blue= Prostasin antibody.



Western blot testing of human 1) Caco-2, 2) MCF7 and 3) placental tissue lysate with Prostasin antibody. Predicted molecular weight ~36 kDa.

## Description

Prostasin is a protein that in humans is encoded by the PRSS8 gene. This gene encodes a member of the peptidase S1 or chymotrypsin family of serine proteases. The encoded preproprotein is proteolytically processed to generate light and heavy chains that associate via a disulfide bond to form the heterodimeric enzyme. This enzyme is highly expressed in prostate epithelia and is one of several proteolytic enzymes found in seminal fluid. This protease exhibits trypsin-like substrate specificity, cleaving protein substrates at the carboxyl terminus of lysine or arginine residues. The encoded protease partially mediates proteolytic activation of the epithelial sodium channel, a regulator of sodium balance, and may also play a role in epithelial barrier formation.

## Application Notes

Optimal dilution of the Prostasin antibody should be determined by the researcher.

## Immunogen

E. coli-derived recombinant human protein (amino acids Q59-R322) was used as the immunogen for the Prostasin antibody.

## Storage

After reconstitution, the Prostasin antibody can be stored for up to one month at 4°C. For long-term, aliquot and store at -20°C. Avoid repeated freezing and thawing.